

1号井戸-56



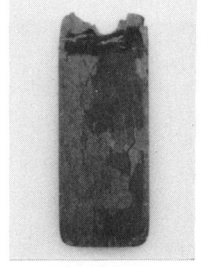
6号地下式土坑-54



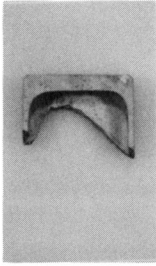
54 硯背線刻



14号土坑-32



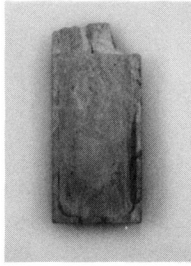
27号土坑-22



4号井戸-82



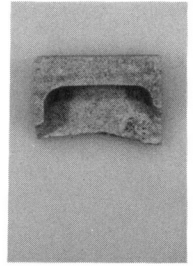
遺構外-110



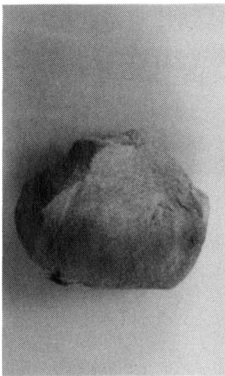
111



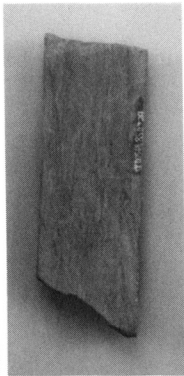
111 硯背線刻



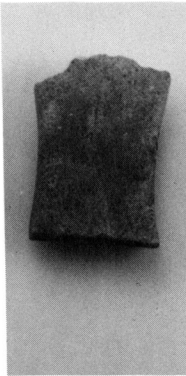
遺構外-113



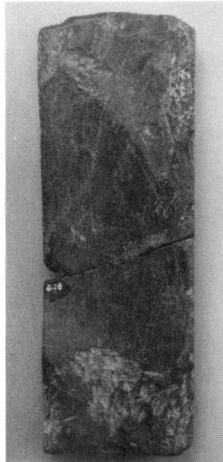
2号土坑-204



83号土坑-19



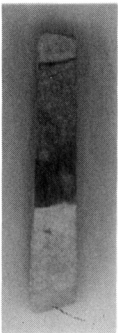
19号地下式土坑-27



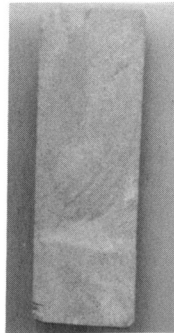
遺構外-120



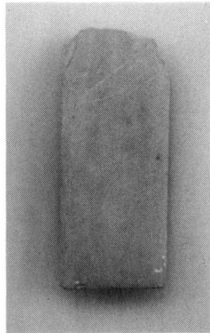
遺構外-122



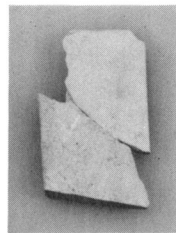
6号地下式土坑-58



7・8号地下式土坑-32



63号土坑-41



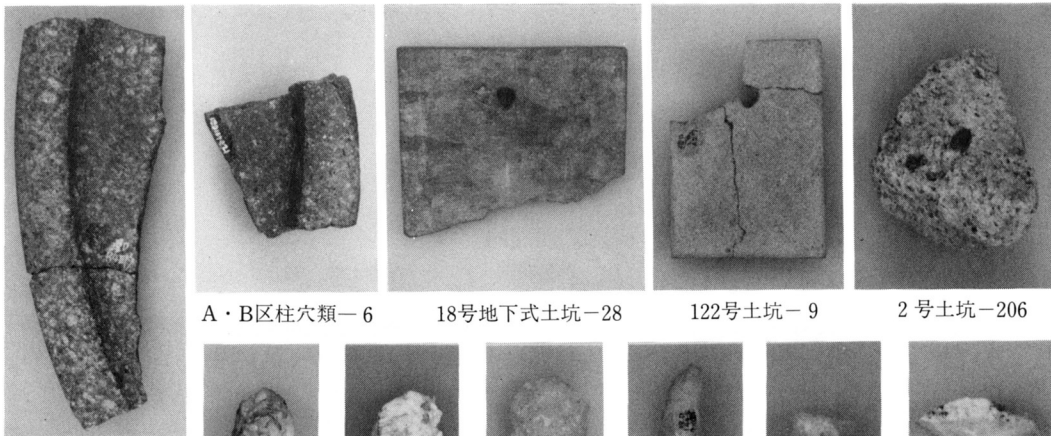
2号土坑-205



遺構間接合-19

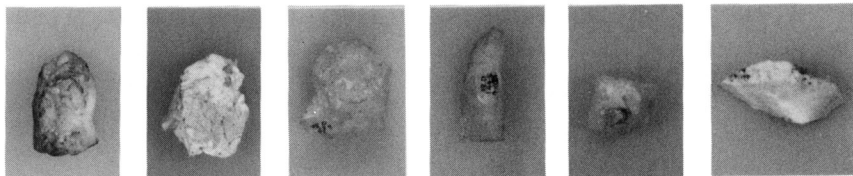
写真 69 硯・砥石



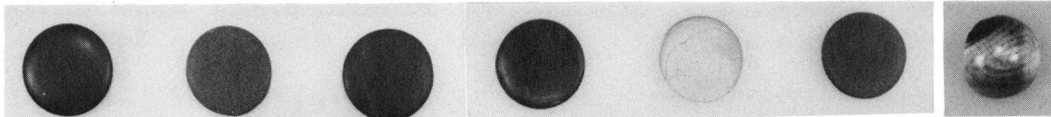


A・B区柱穴類-6      18号地下式土坑-28      122号土坑-9      2号土坑-206

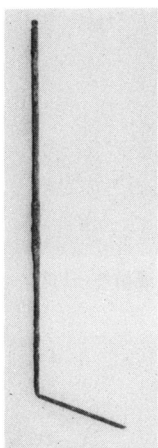
5号地下式土坑-81



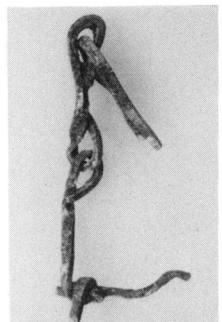
12号土坑-10      14号土坑-33      54号土坑-10      63号土坑-43      12号地下式土坑-11      122号土坑-10



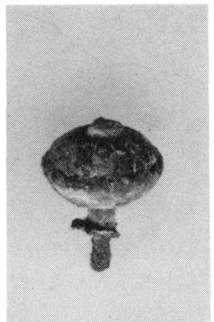
4号地下式土坑-109      19号地下式土坑-25      63号土坑-42      1号溝-4 A・B区柱穴類-10      遺構外-117      6号地下式土坑-59



3号井戸-68



6号地下式土坑-62



65



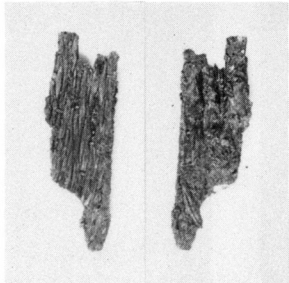
66



63



2号土坑-209



6号地下式土坑-60



7・8号地下式土坑-29



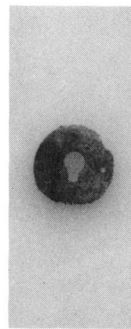
2号土坑-211



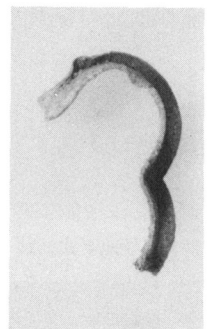
2号土坑-212



14号土坑-34



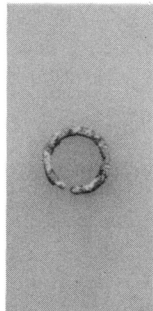
43号土坑-16



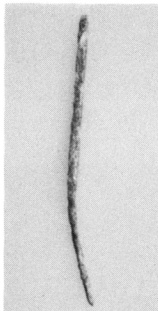
9号地下式土坑-34



88号土坑-9



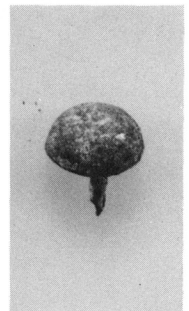
11号地下式  
土坑-20



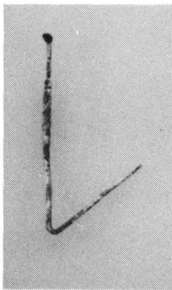
18号地下式土坑-35



19号地下式土坑-34



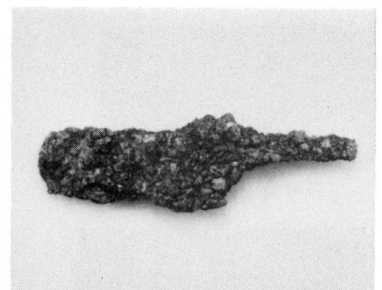
遺構外-132



遺構外-145



5号地下式土坑-82



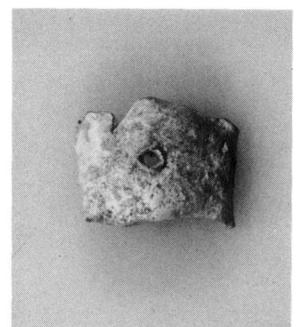
27号土坑-24



69号土坑-2・1・3, 112号土坑-10・11



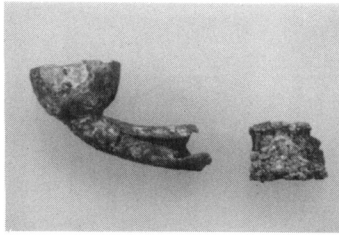
遺構外-146



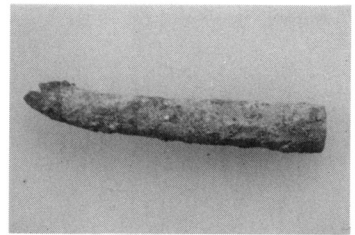
119号土坑-6



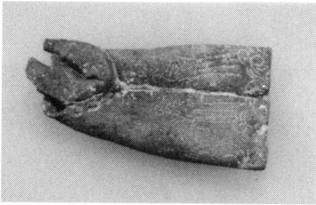
4号地下式土坑-111



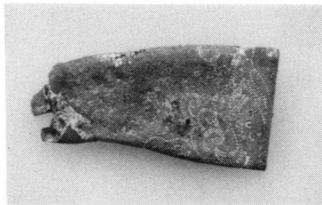
5号地下式土坑-84



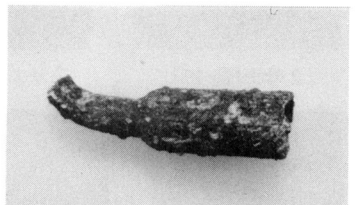
63号土坑-44



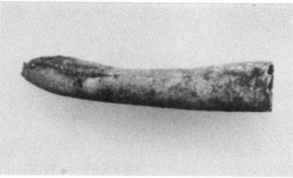
1号遺物集中-16 表



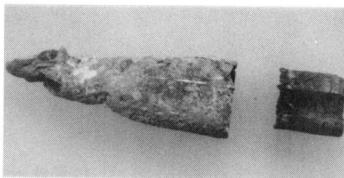
16 裏



13号地下式土坑-44



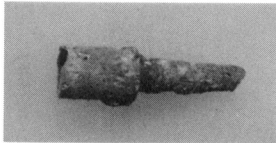
19号地下式土坑-30



5号井戸・136・137号土坑-8



4号地下式土坑-112



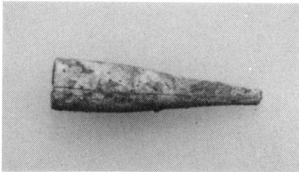
5号地下式土坑-86



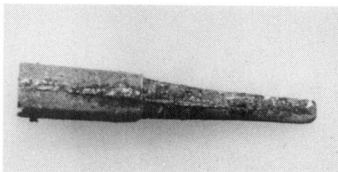
7号地下式土坑-34



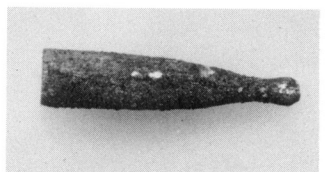
52・53号土坑-9



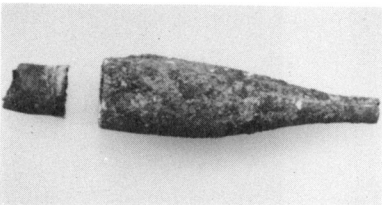
14号地下式土坑-16



19号地下式土坑-31



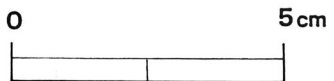
32

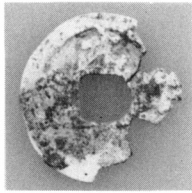


33

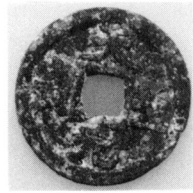


108号土坑-7

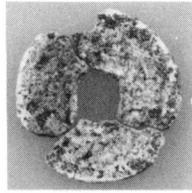




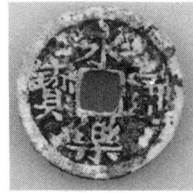
2号井戸-12



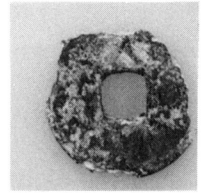
7号地下式土坑-38



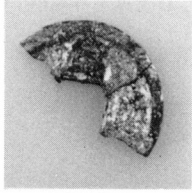
7・8号地下式  
土坑-42



43



1号溝-5



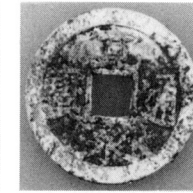
19号地下式土坑-36



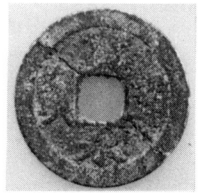
2号井戸-13



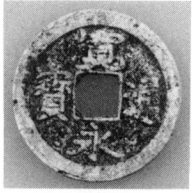
7号地下式土坑-39



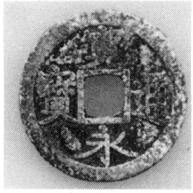
7・8号地下式  
土坑-45



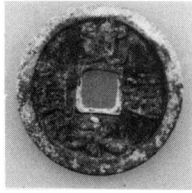
1号土坑-104



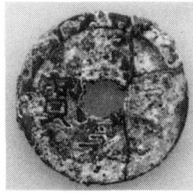
26号土坑-9



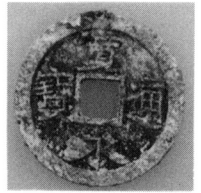
4号井戸-83



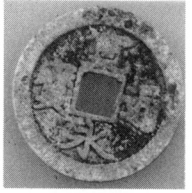
11号地下式土坑-17



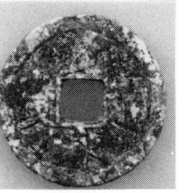
18



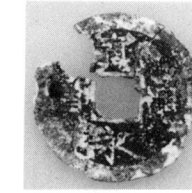
19号地下式土坑-37



19号地下式土坑-38



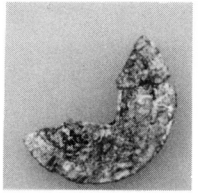
117号土坑-1



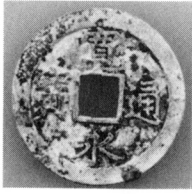
4号地下式土坑-118



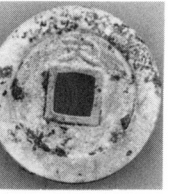
120



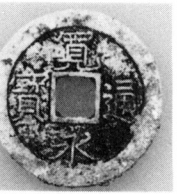
5号地下式土坑-90



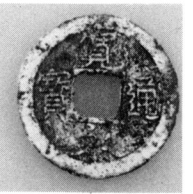
7号地下式土坑-41



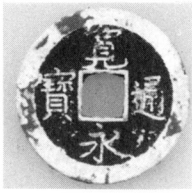
7・8号地下式土坑-48



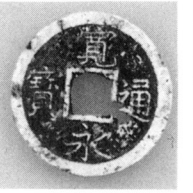
49



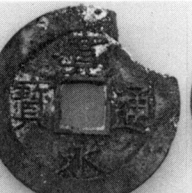
51



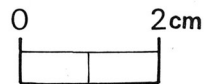
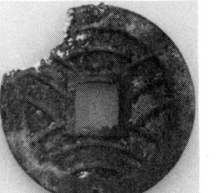
55



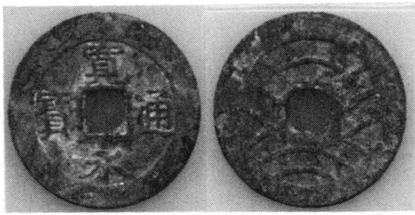
2号土坑-218



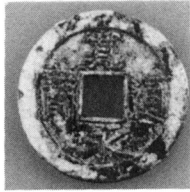
16号土坑-17



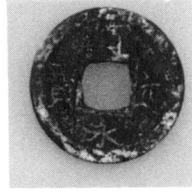




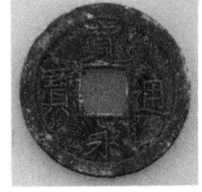
5号遺物集中-9



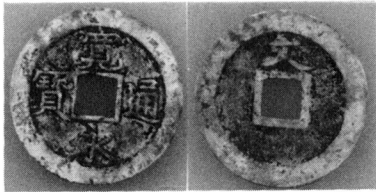
6号遺物集中-2



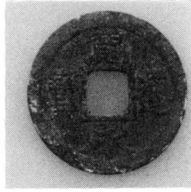
C・D区柱穴類-1



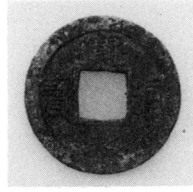
11号地下式土坑-18



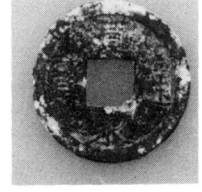
19号地下式土坑-41



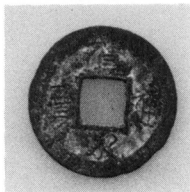
47



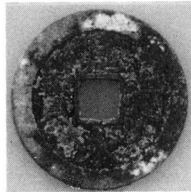
48



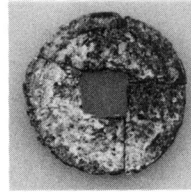
53



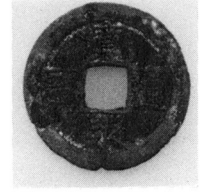
56



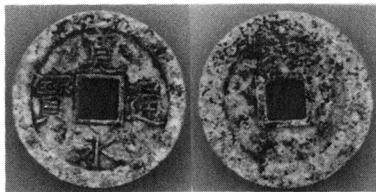
57



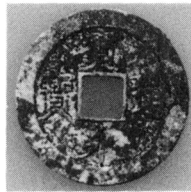
58



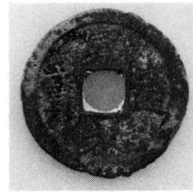
62



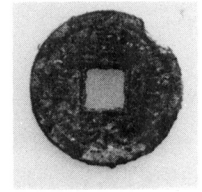
111号土坑-12



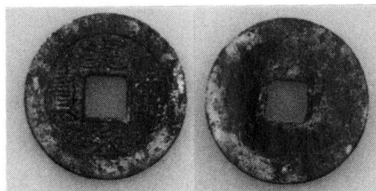
13



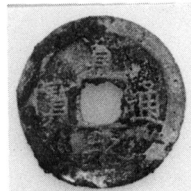
15



5号井戸・136・137号土坑-8



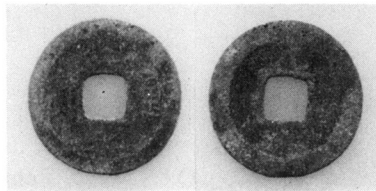
138・139・140号土坑-9



141号土坑-8



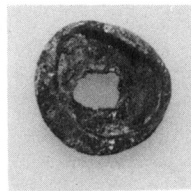
遺構外-142



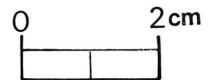
遺構外-143



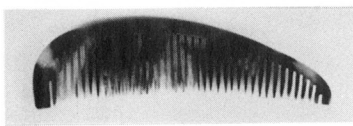
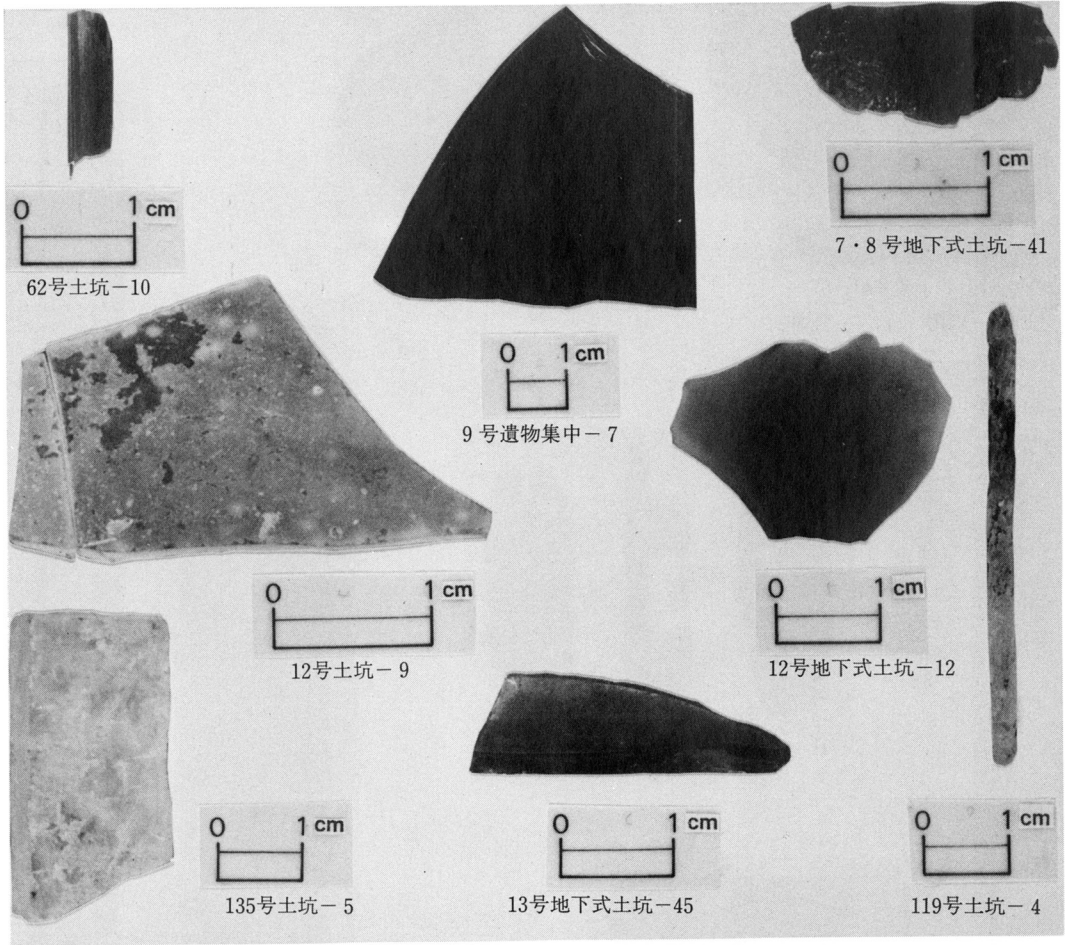
19号地下式土坑-35



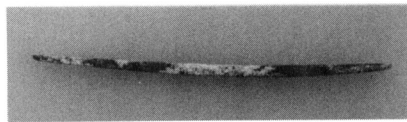
遺構外-134



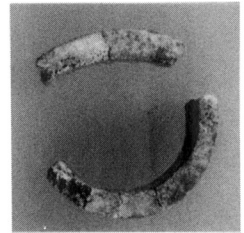




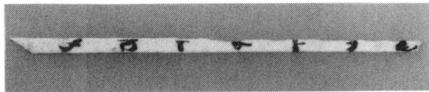
80号土坑-1



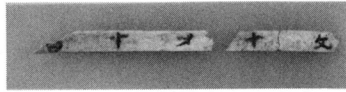
5号地下式土坑-83



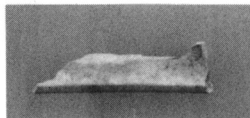
121号土坑-2



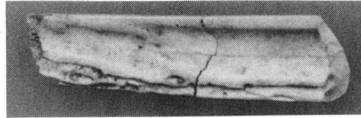
27号土坑-25



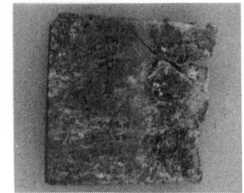
14号土坑-35



4号遺物集中-3

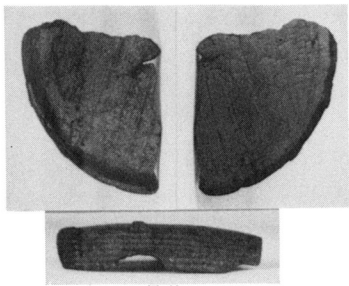


4号遺物集中-4

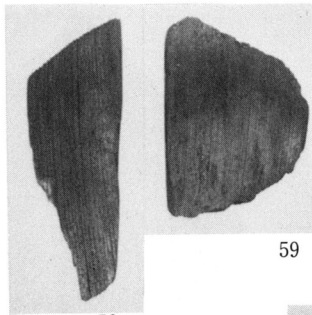


63号土坑-45

写真 75 ガラス製品, 骨角製品, 龜甲製品  
Plate 75 Glass and bone artifacts

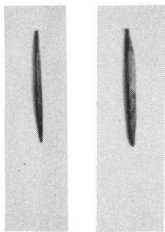


1号井戸-57  
内面 外面  
側面



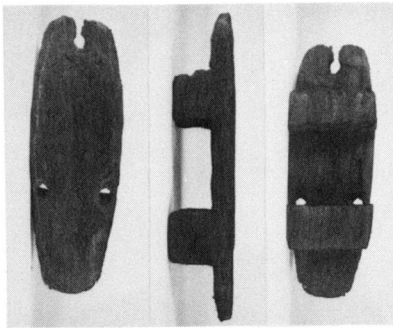
58

59

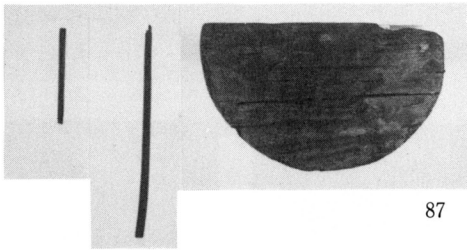


60

61



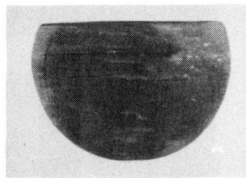
4号井戸-84



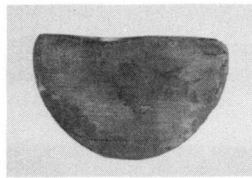
85

86

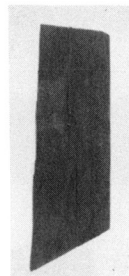
87



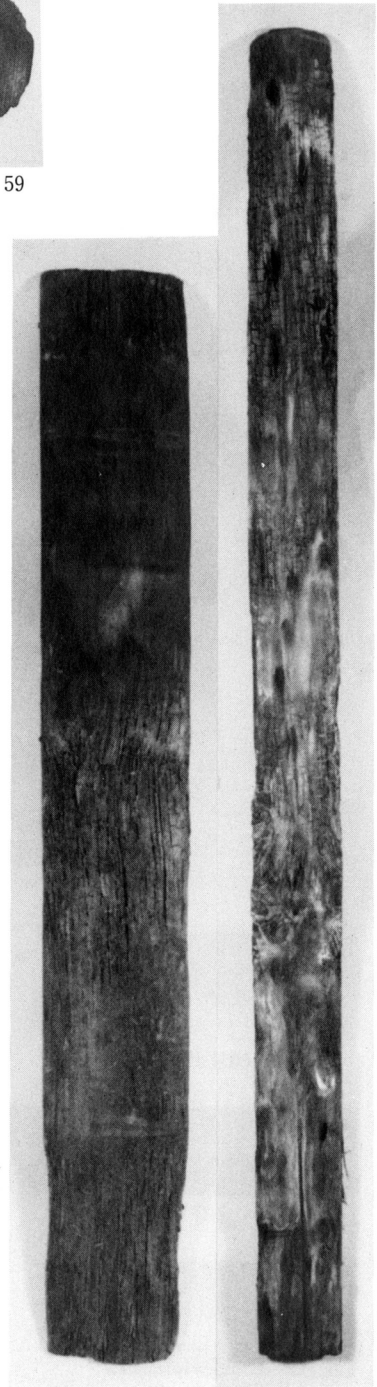
88



89

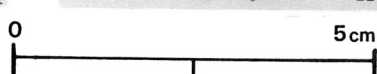
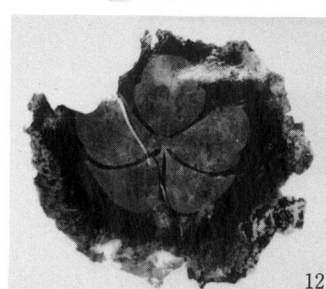
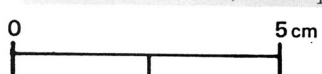
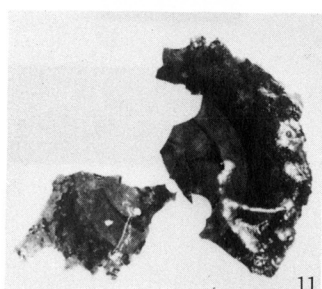
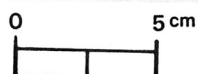
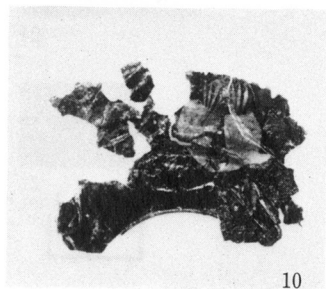
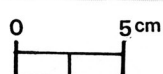
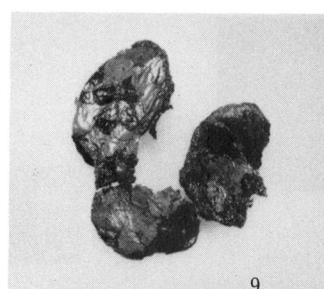
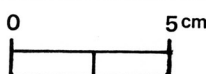
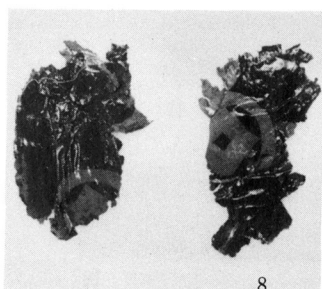
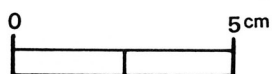
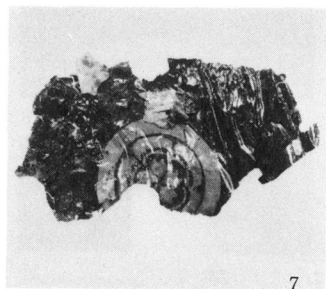
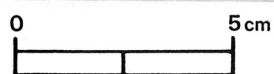
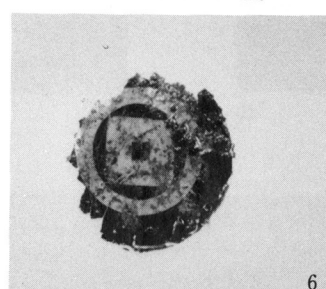
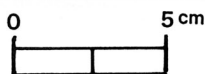
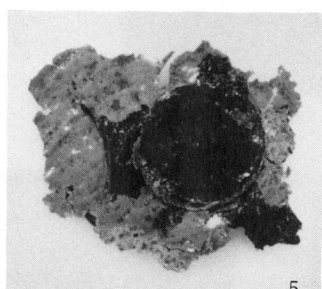
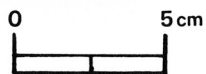
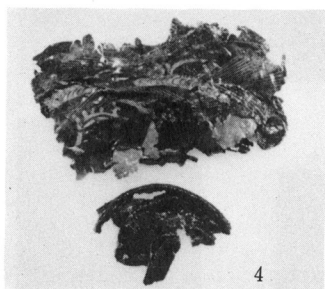
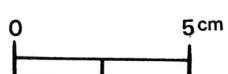
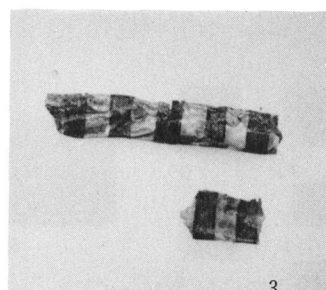
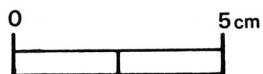
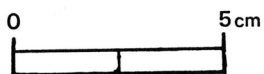
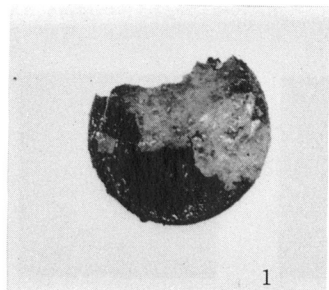


90



1号井戸  
底部木杵

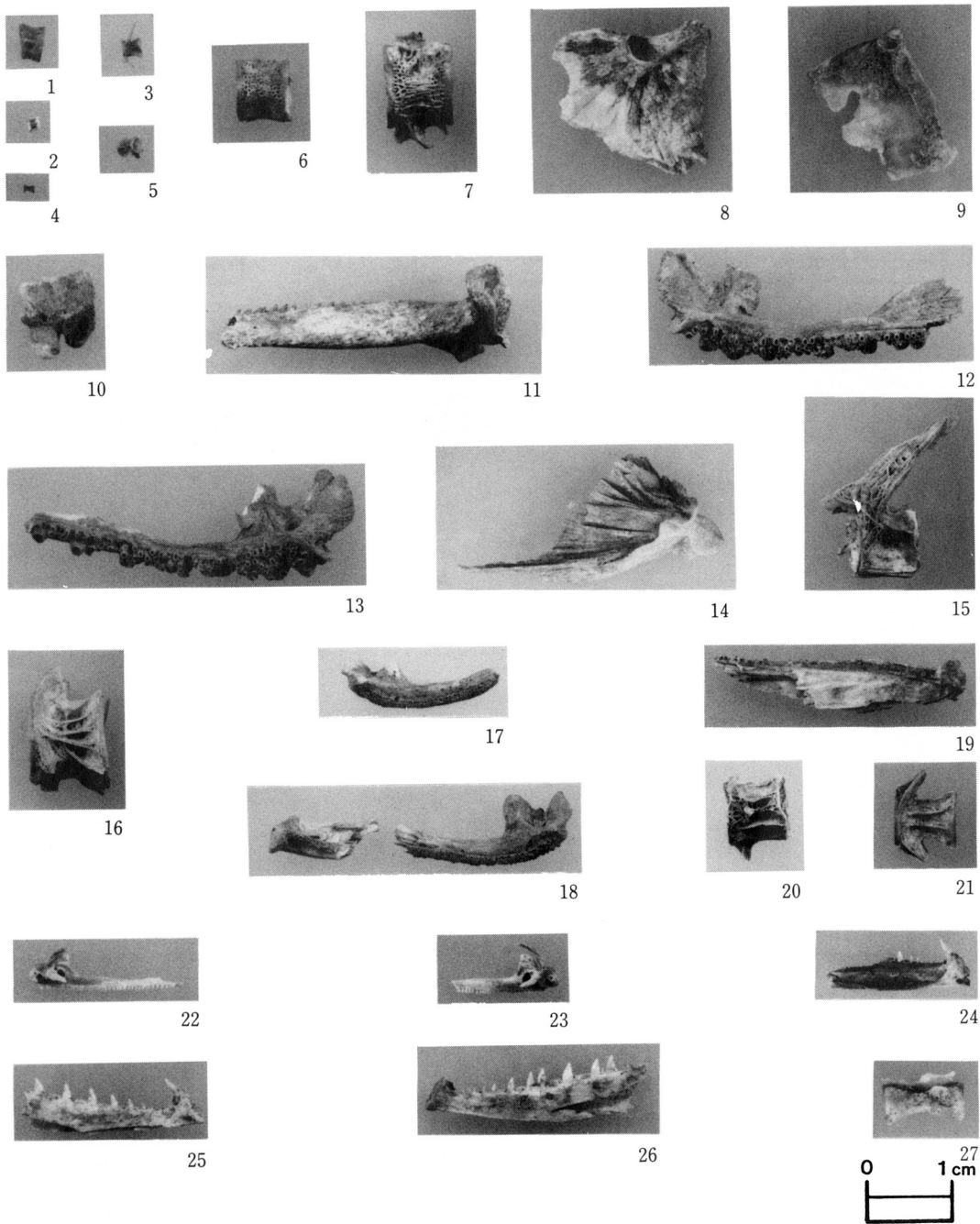
4号井戸  
底部木杵



1 ~ 3 : 4号地下式土坑    4 : 1号土坑    5 · 6 : 2号土坑    7 ~ 9 : 4号井戸    10 : 11号地下式土坑  
11 · 12 : 13号地下式土坑

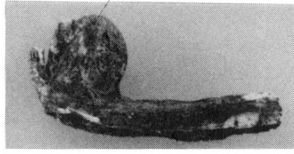
写真 77 漆製品

Plate 77 Lacquered wood artifacts

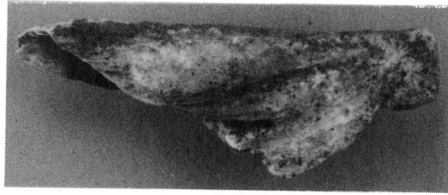


1. 軟骨魚綱種不明腹椎 2. ニシン科種不明尾椎 3. マイワシ尾椎 4. カタクチイワシ尾椎 5. ウナギ腹椎 6. サケ属腹椎 7. サケ属尾椎 8. コイ科種不明右主鰓蓋骨 9. コイ科?種不明左主鰓蓋骨 10. コイ科種不明咽頭骨 11. ナマズ胸鰭棘 12. マダラ左前上顎骨 13. マダラ右前上顎骨 14. マダラ左方骨 15. マダラ腹椎 16. マダラ尾椎 17. スケトウダラ左前上顎骨 18. スケトウダラ右前上顎骨 19. スケトウダラ左歯骨 20. スケトウダラ腹椎 21. スケトウダラ尾椎 22. カマス属右前上顎骨 23. カマス属左前上顎骨 24. カマス属左歯骨 25. カマス属右歯骨 26. カマス属左歯骨 27. カマス科種不明腹椎

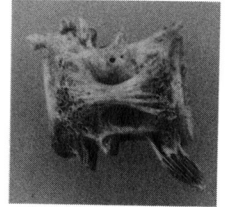
写真 78 魚骨 (1)



28



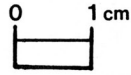
30



31



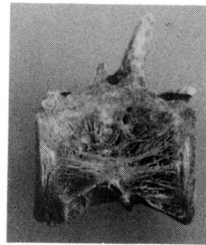
29



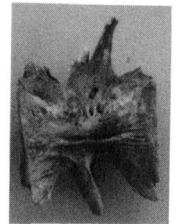
32



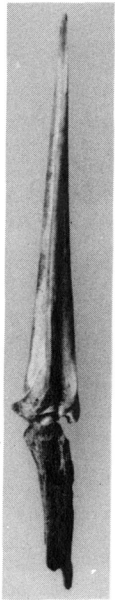
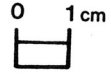
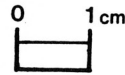
33



34



35



36



37



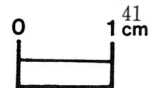
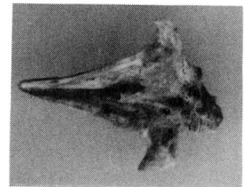
38



39



40



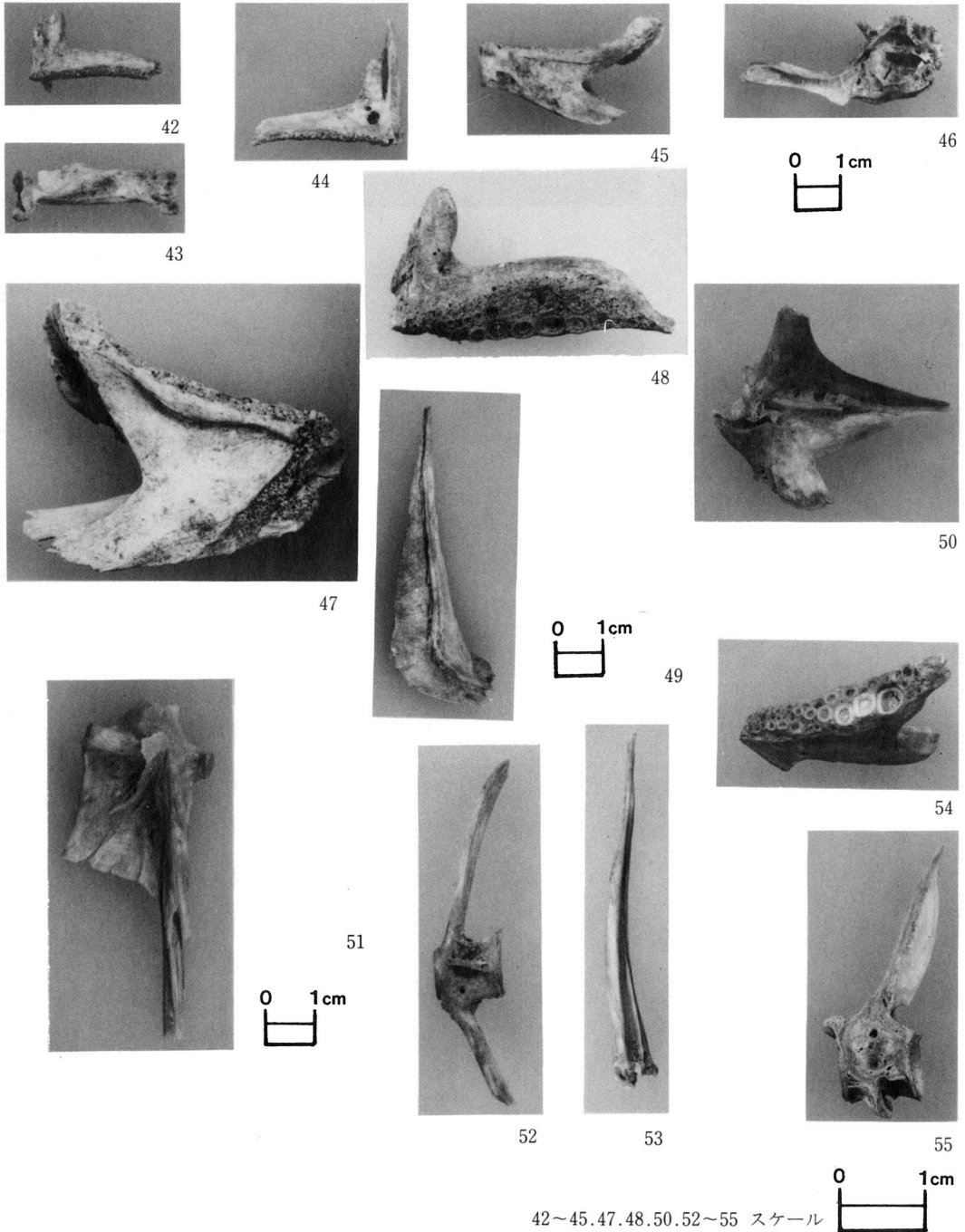
28.29.31~33.36~41 スケール

28. ブリ属右上顎骨 29. ブリ属左上顎骨 30. ブリ属左歯骨 31. ブリ属尾椎 32. マアジ属種不明腹椎 33. マアジ属種不明尾椎 34. シイラ腹椎 35. シイラ尾椎 36. タイ科種不明第1間血管棘 37. タイ科種不明右上顎骨 38. タイ科種不明尾椎 39. タイ科種不明右前鰓蓋骨 40. タイ科種不明担鰭骨 41. タイ科種不明右角骨

写真 79 魚骨 (2)

Plate 79 Fish bone samples

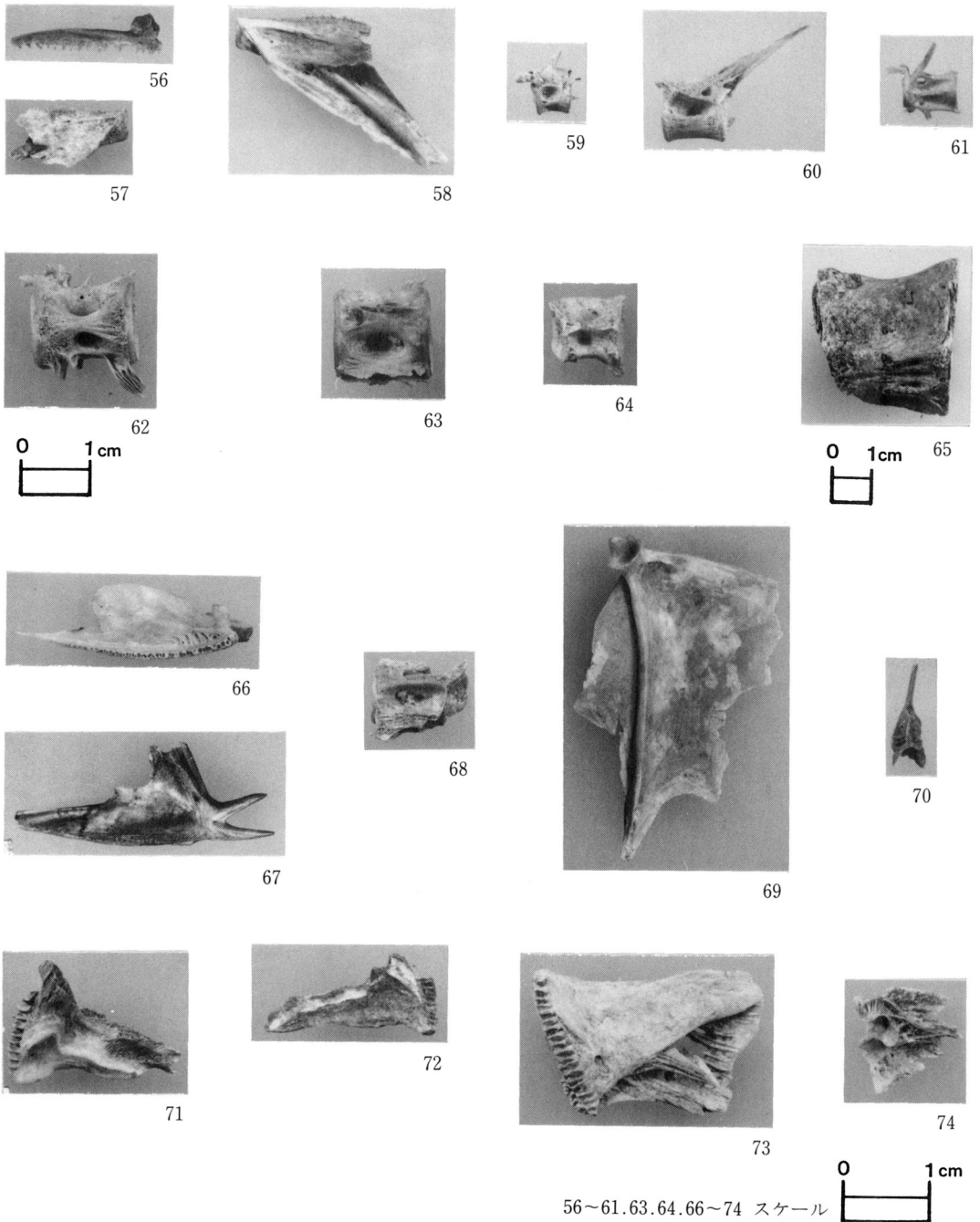




42. キダイ右前上顎骨 43. キダイ左左上顎骨 44. キダイ左前上顎骨 45. キダイ右歯骨 46. キダイ副楔骨  
 47. マダイ左歯骨 48. マダイ右前上顎骨 49. マダイ左前鰓蓋骨 50. マダイ左角骨 51. マダイ左舌顎骨  
 52. マダイ腹椎 53. マダイ第1間血管棘 54. クロダイ属右歯骨 55. クロダイ属腹椎

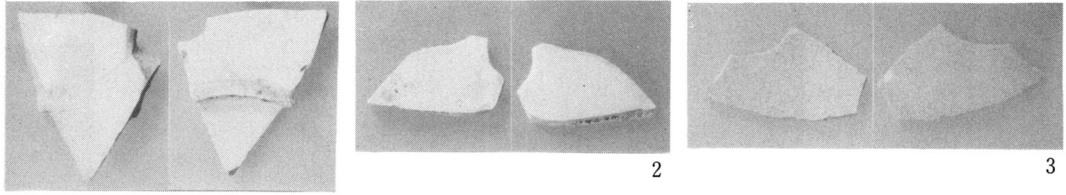
写真 80 魚骨 (3)

Plate 80 Fish bone samples

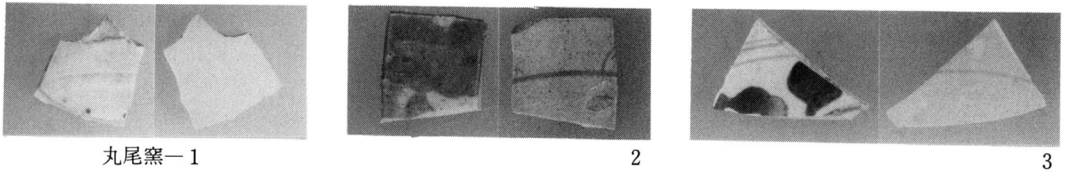
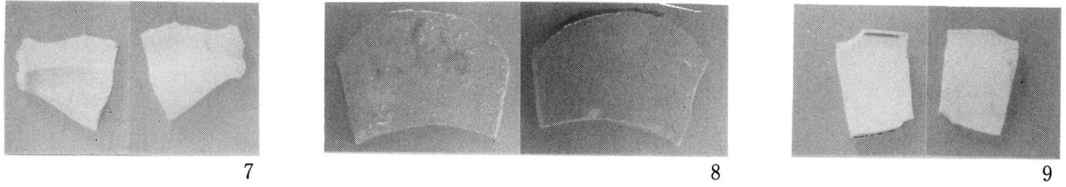
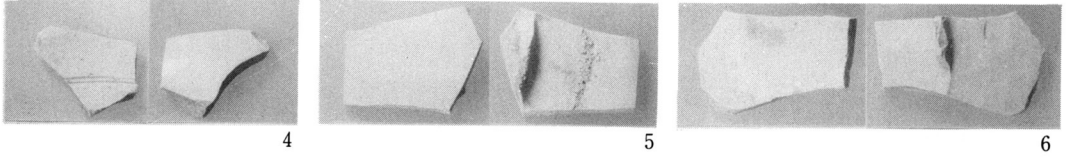


56. サバ属左前上顎骨 57. サバ属左歯骨 58. サバ属右歯骨 59・60. サバ属腹椎 61. サバ属尾椎 62. サワラ腹椎 63. カツオ腹椎 64. カツオ尾椎 65. マグロ属腹椎 66. コチ左口蓋骨 67. コチ右前鰓蓋骨 68. コチ尾椎 69. コチ左主鰓蓋骨 70. カレイ亜目種不明腹椎 71. フグ科種不明右前上顎骨 72. フグ科種不明左前上顎骨 73. フグ科種不明右歯骨 74. フグ科種不明右角骨

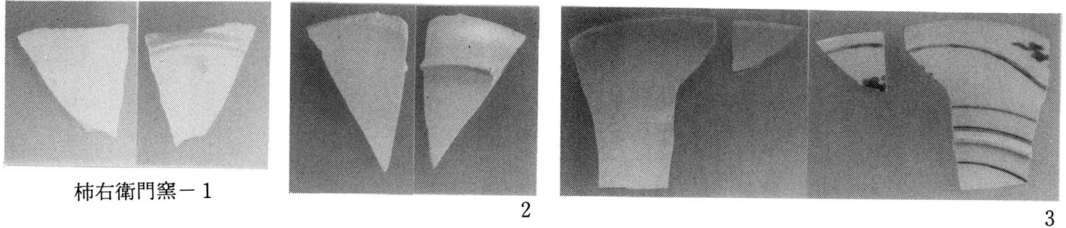
写真 81 魚骨 (4)



山辺田窯-1



丸尾窯-1



柿右衛門窯-1

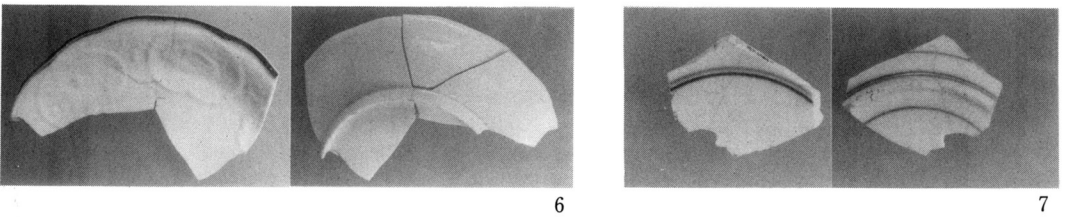
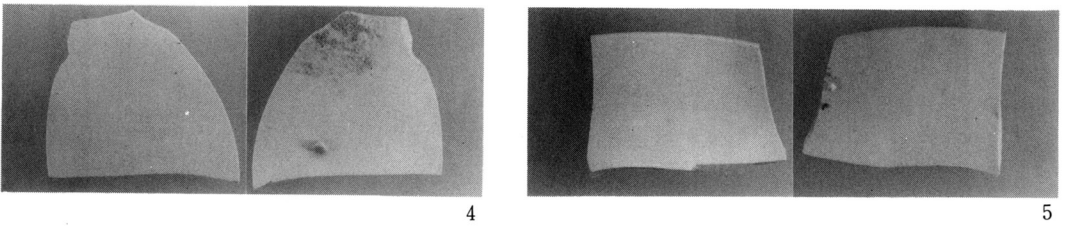
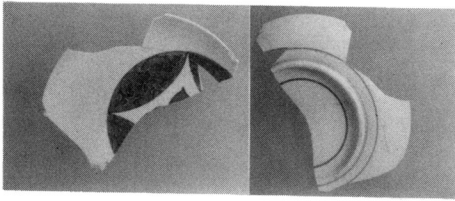
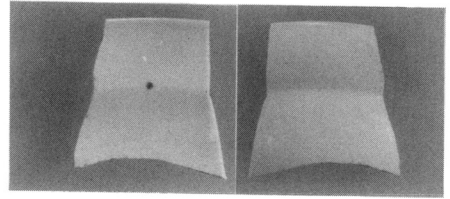


写真 82 对比資料：肥前古窯跡出土資料（1）

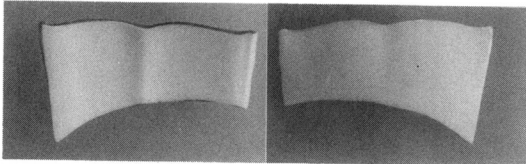
Plate 82 Chemically analyzed porcelain samples from Hizen kiln sites



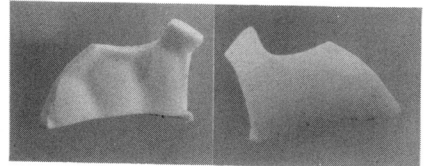
柿右衛門窯-8



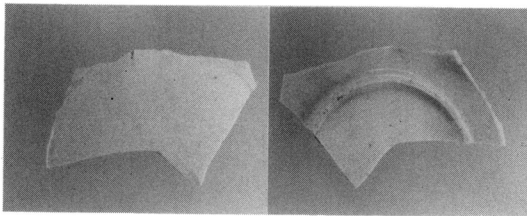
樋口窯-1



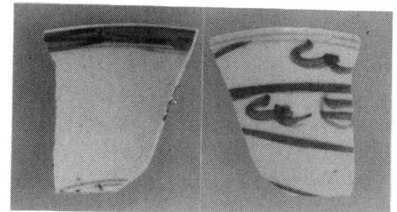
南川原窯ノ辻窯-1



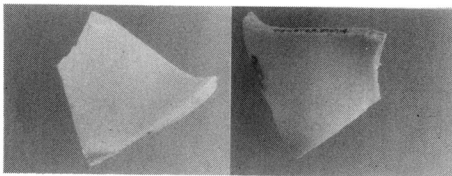
2



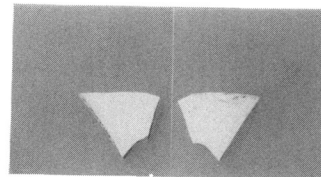
天狗谷窯-1



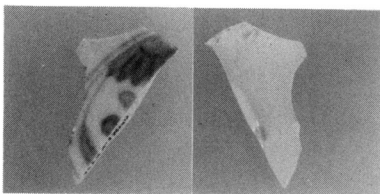
2



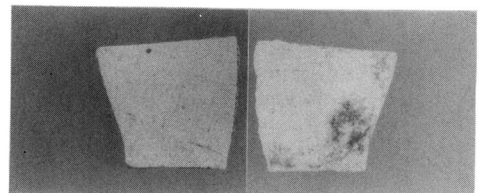
下白川窯-1



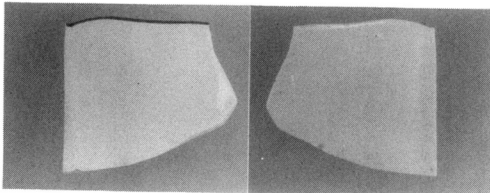
楠木谷窯-1



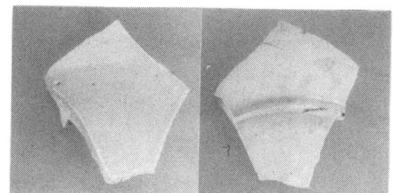
2



3

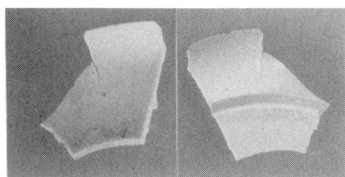


4

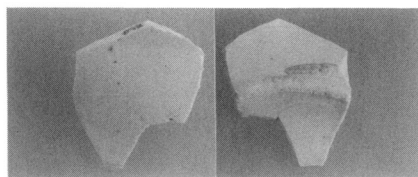


長吉谷窯-1

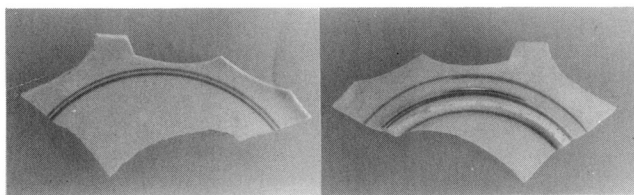
写真 83 对比資料：肥前古窯跡出土資料（2）



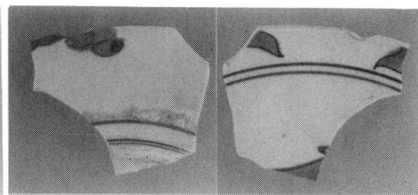
長吉谷窯-2



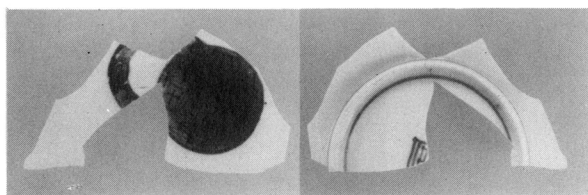
3



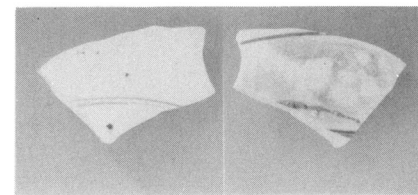
4



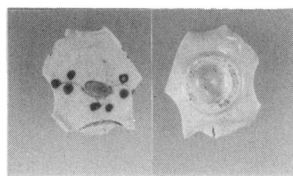
5



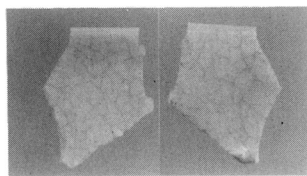
6



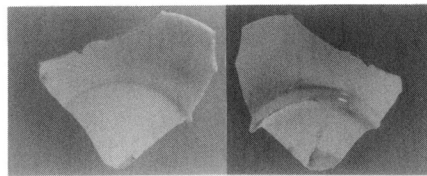
猿川窯-1



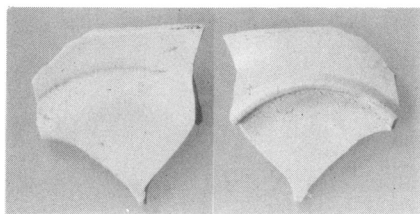
窯ノ辻窯-1



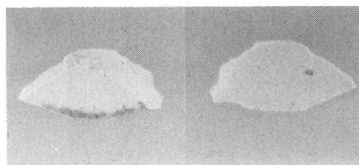
ダンバギリ窯-1



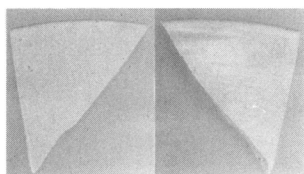
鍋島藩窯-1



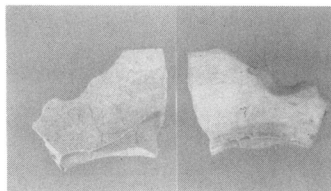
吉田窯-1



2



不動山皿屋谷窯-1



2

写真 84 对比資料：肥前古窯跡出土資料 (3)





1. 色絵山水文大鉢



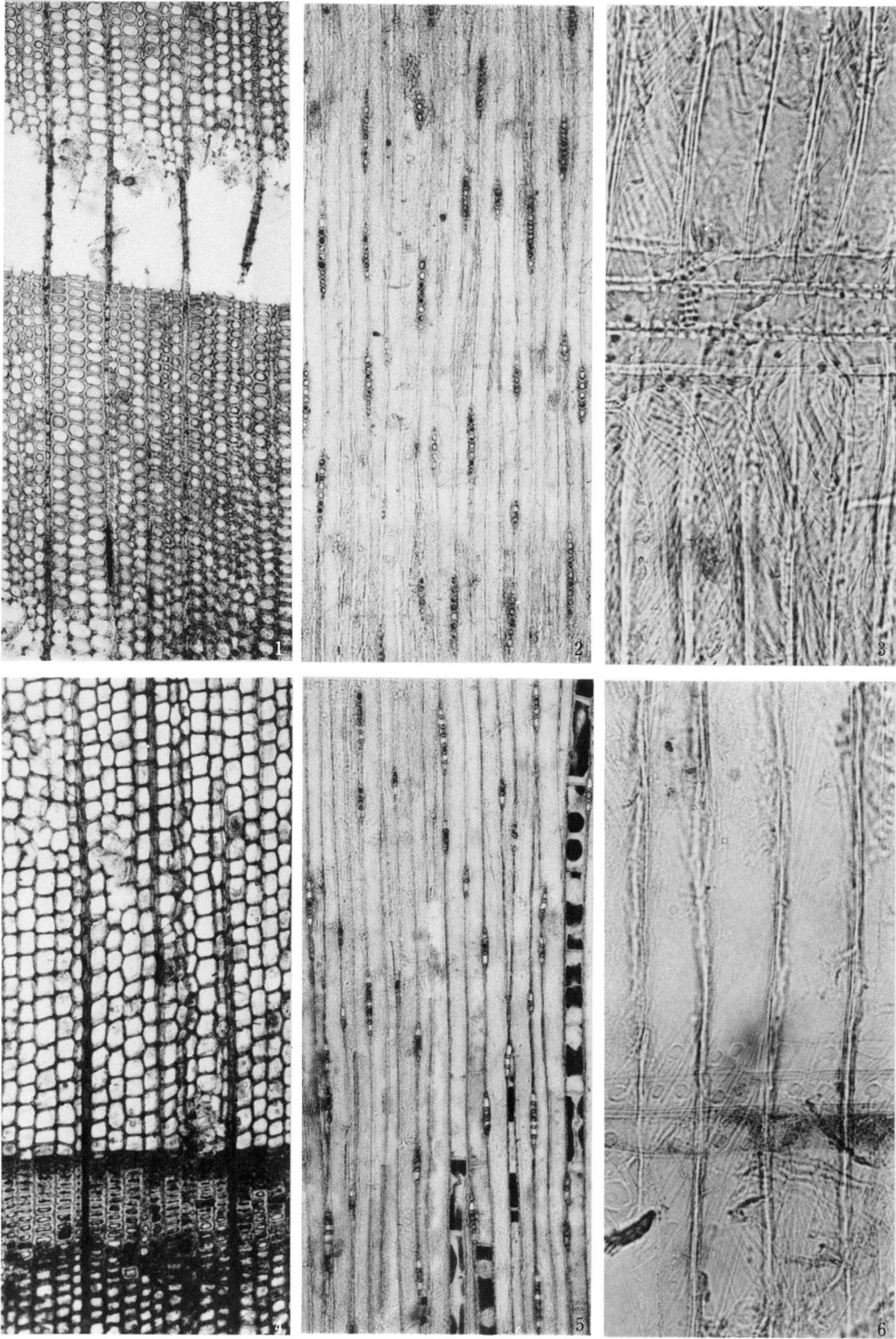
2. 色絵山水鹿文輪花大鉢



3. 色絵花鳥文輪花大鉢

写真 85 参考資料：古九谷様式伝世品（東京国立博物館蔵）

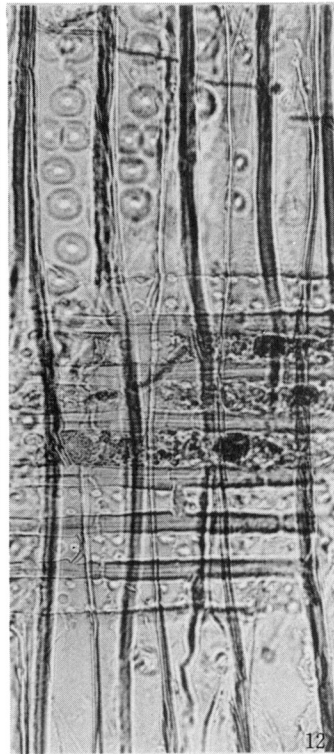
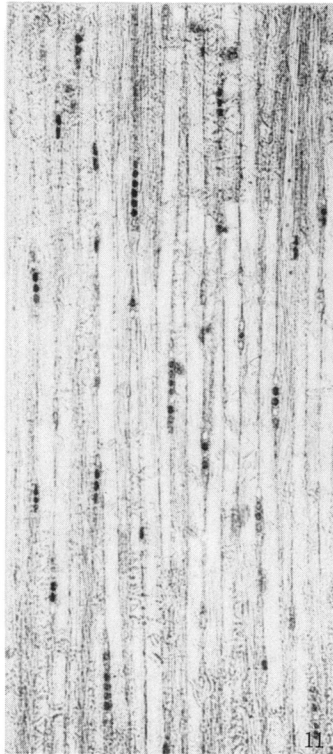
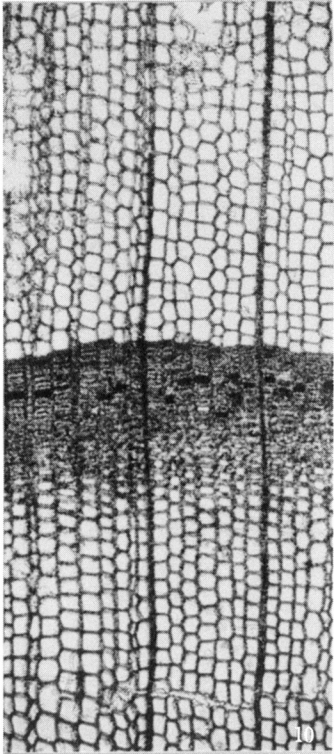
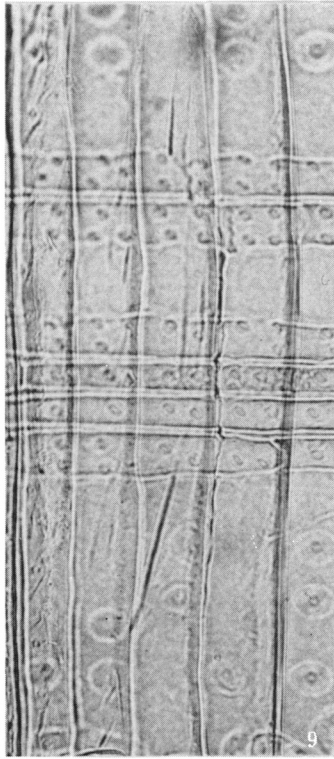
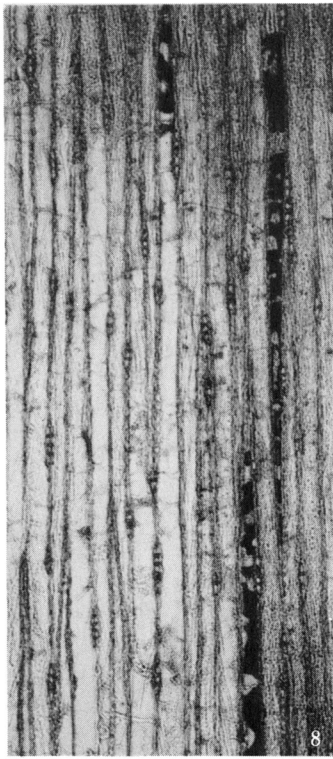
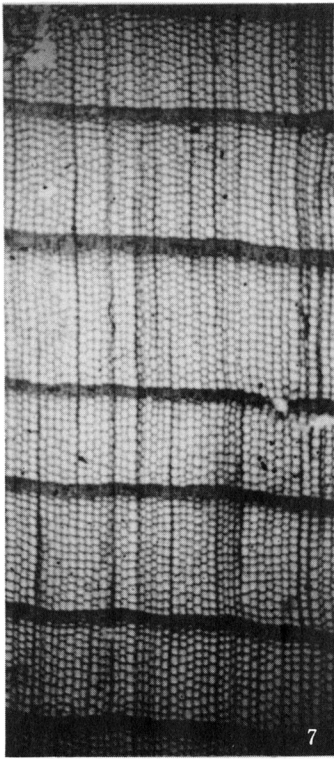
Plate 85 Museum examples of Old Kutani (Ko Kutani) style dishes



1、2、3…モミ属 4号井戸(No.1) C×75、T×75、R×300 (下駄)  
 4、5、6…スギ 4号井戸(No.6) C×75、T×75、R×300

写真 86 材・炭化材の顕微鏡写真(1)

Plate 86 Wood samples examined with microscopes

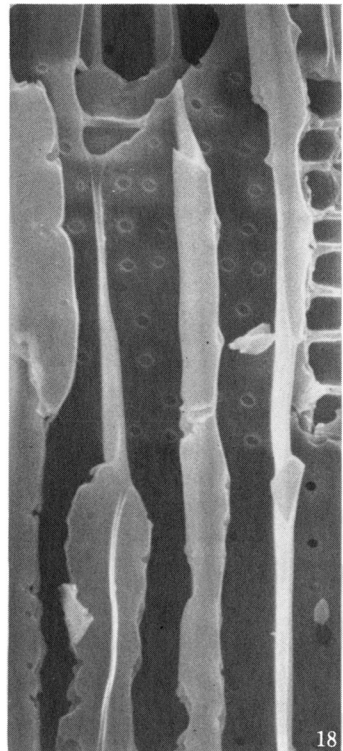
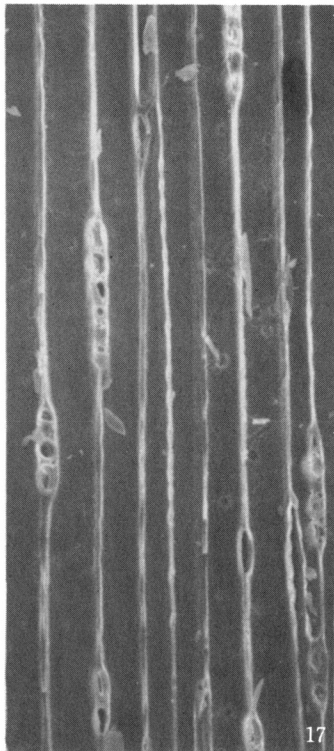
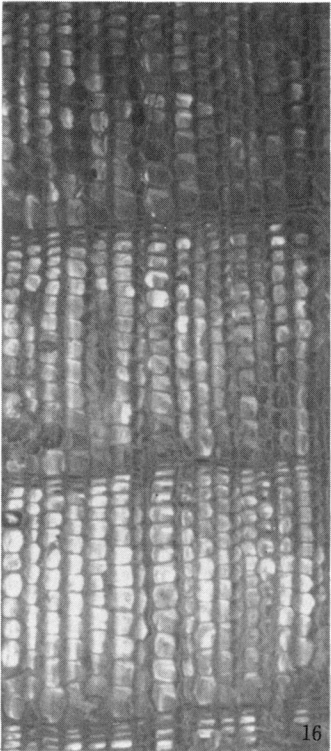
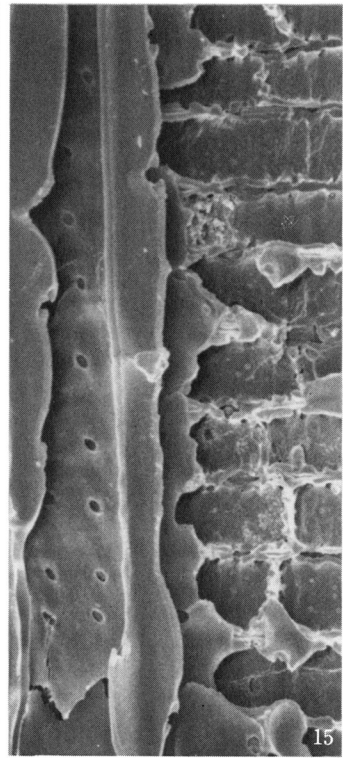
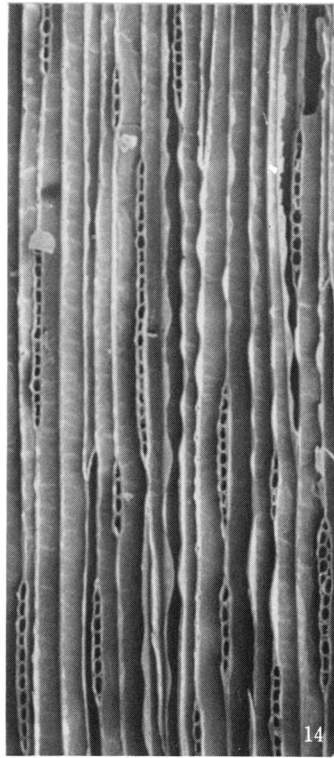
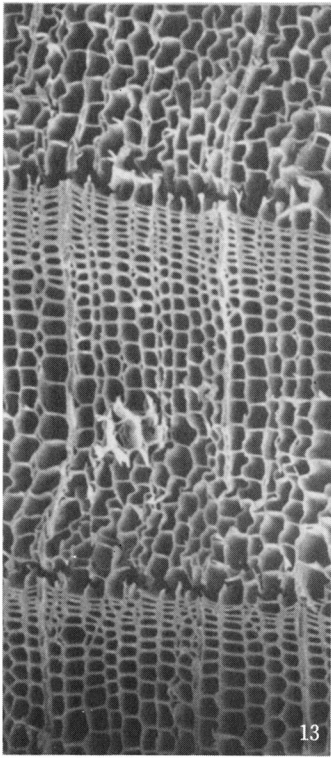


7、8、9 …ヒノキ属 1号井戸内枿 C×30、T×75、R×300

10、11、12…ネズコ 4号井戸(No.3) C×75、T×75、R×300 (箸)

写真 87 材・炭化材の顕微鏡写真(2)

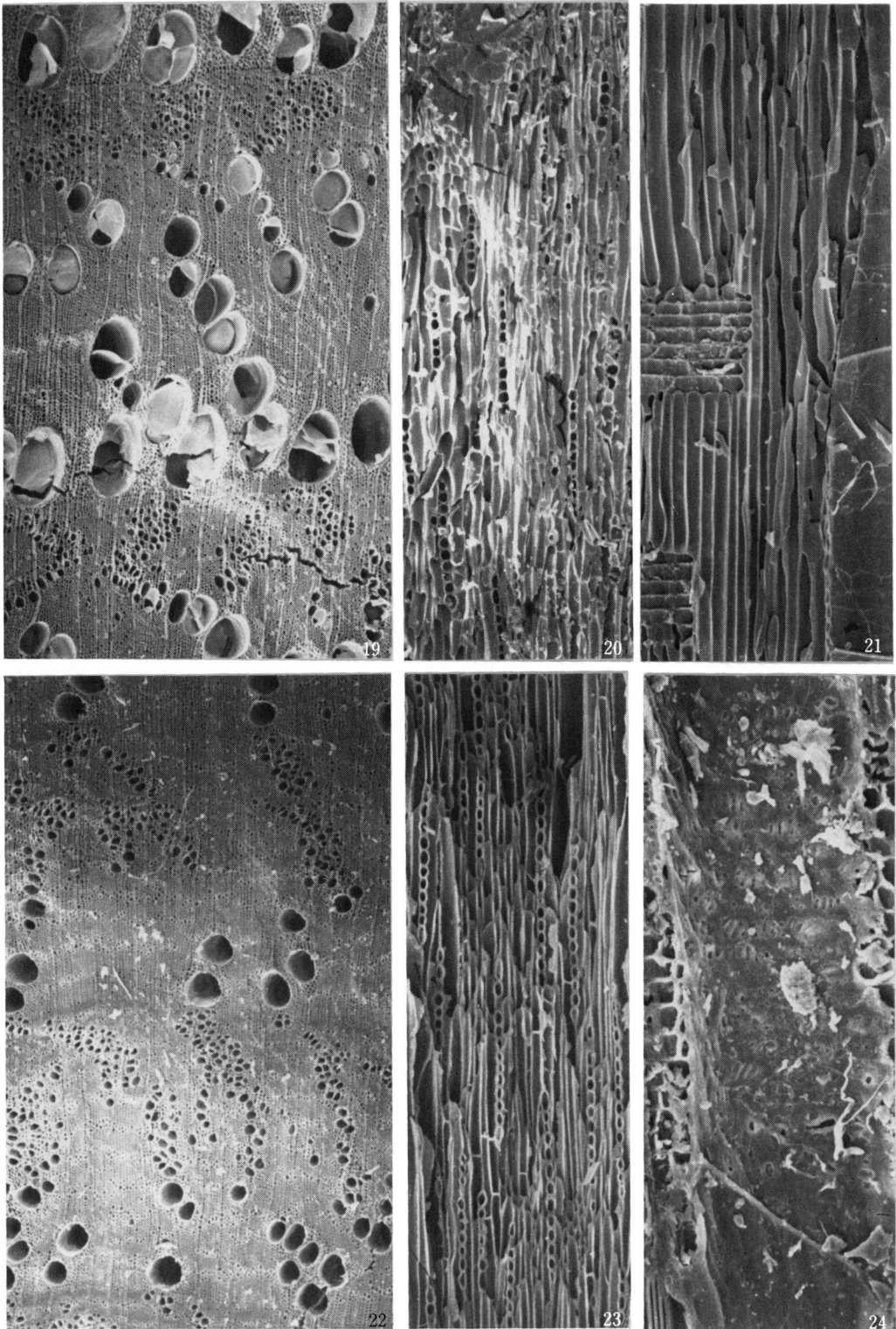




13、14、15…モミ属近似種 6号地下式土坑下層850912(No.10) C×80、T×100、R×500

16、17、18…スギ近似種 6号地下式土坑上層850903(No.7) C×100、T×200、R×400

写真 88 材・炭化材の顕微鏡写真 (3)

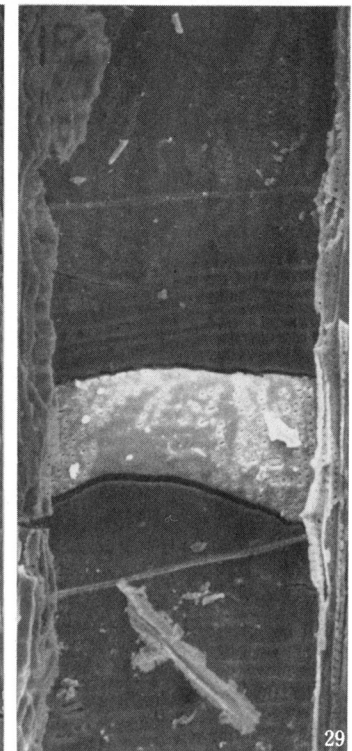
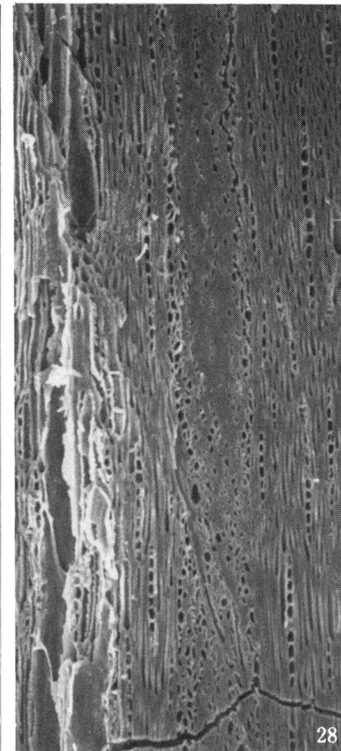
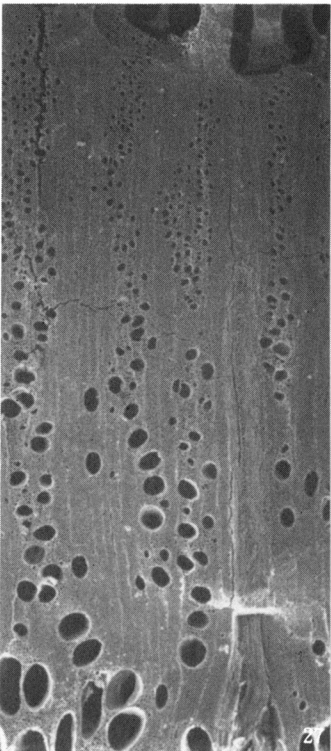
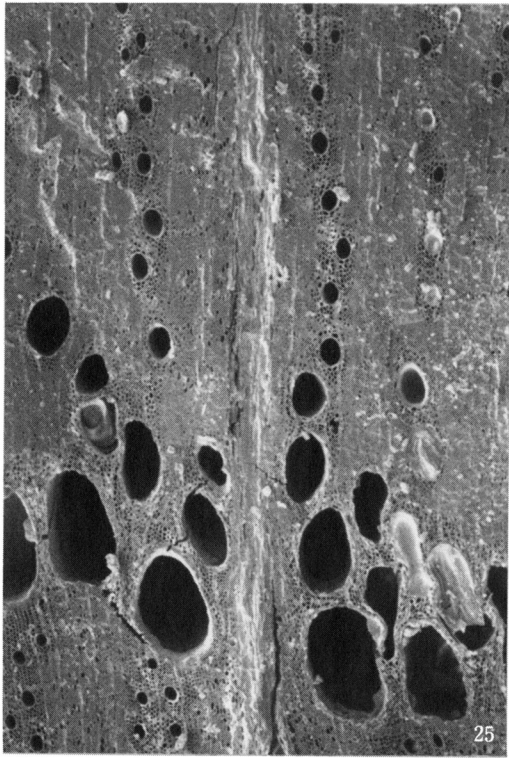


19,20,21…クリ 75号土坑851002(No.5) C×30、T×100、R×150

22,23,24…シノキ属 1号井戸850605PM(No.14) C×30、T×100、R×200

写真 89 材・炭化材の顕微鏡写真(4)



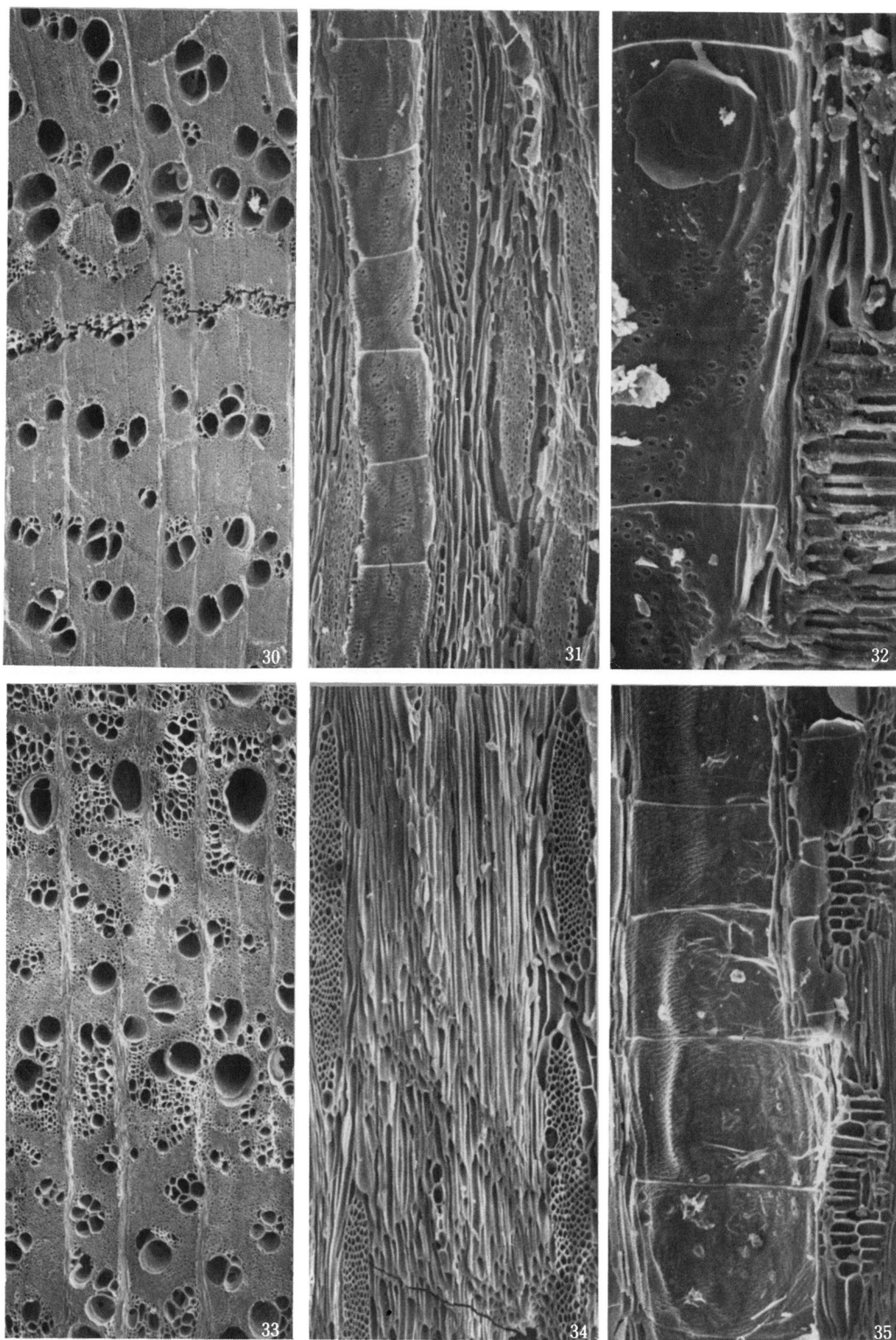


25、26…クヌギ類 75号土坑851003(No.1) C×50、T×100

27、28、29…コナラ類 6号地下式土坑上層850903 C×30、T×100、R×150

写真90 材・炭化材の顕微鏡写真(5)

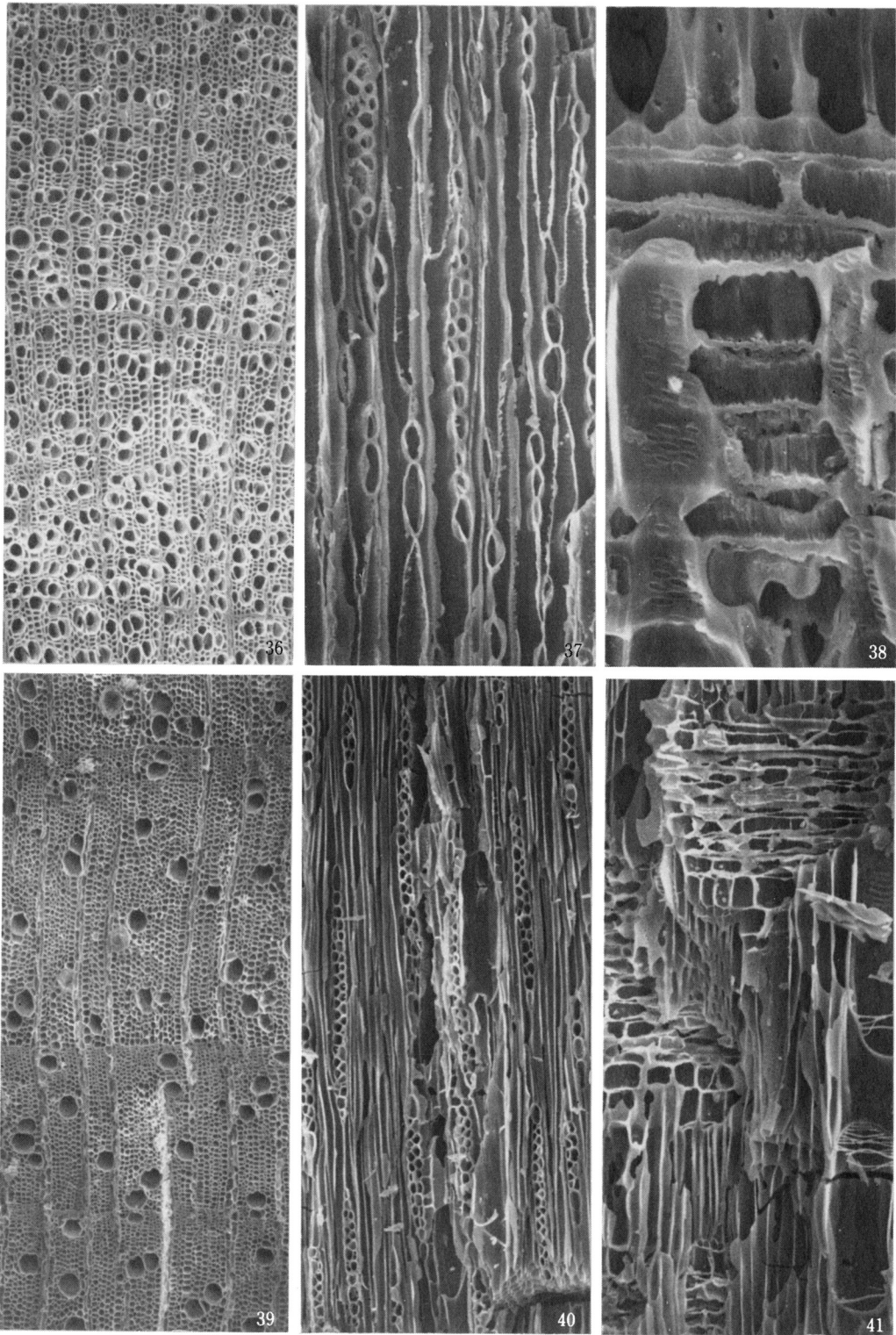
Plate 90 Wood samples examined with microscopes



30, 31, 32...エノキ 6号地下式土坑上層850910(No.8) C×30, T×100, R×300

33, 34, 35...ケヤキ 1号井戸850605(No.15) C×30, T×100, R×100

写真 91 材・炭化材の顕微鏡写真 (6)



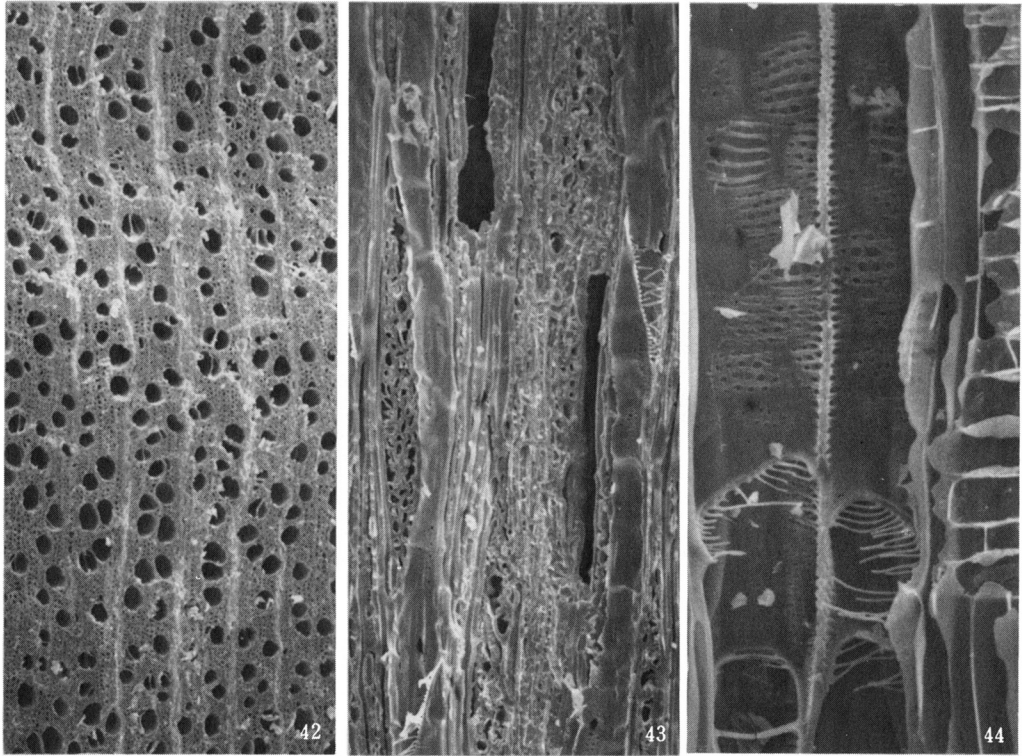
36, 37, 38…広葉樹(散孔材)一種A 1号井戸850605PM(No.14) C×100、T×200、R×800

39, 40, 41…広葉樹(散孔材)一種B 1号井戸850612(No.16) C×60、T×100、R×150

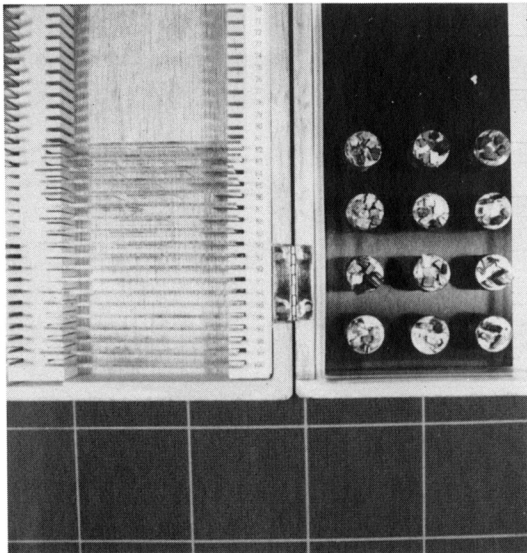
写真 92 材・炭化材の顕微鏡写真 (7)

Plate 92 Wood samples examined with microscopes





42、43、44…広葉樹(散孔材)一種C 7.8号地下式土坑851002(No.26)  
C×50、T×150、R×500



◀プレパラートと電子顕微鏡用  
試料台の保管状況  
左；プレパラート  
右；試料台

写真 93 材・炭化材の顕微鏡写真(8)

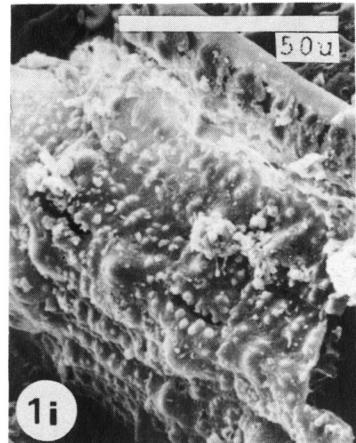
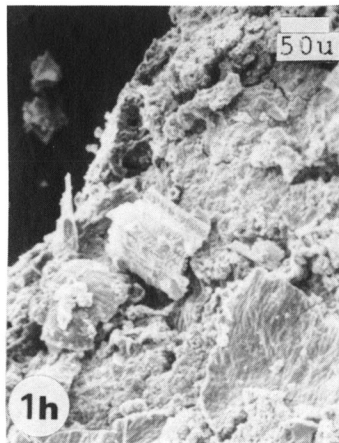
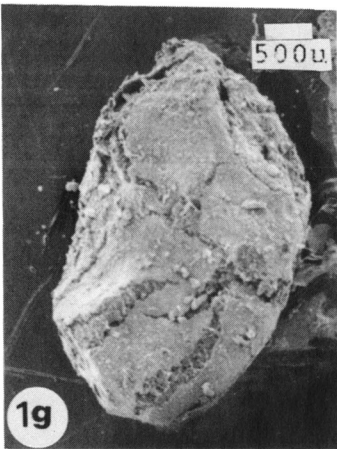
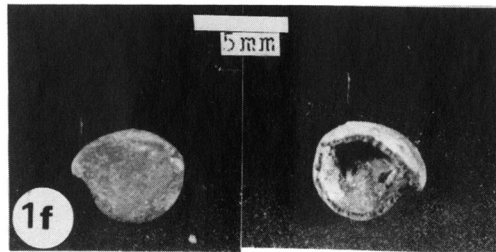
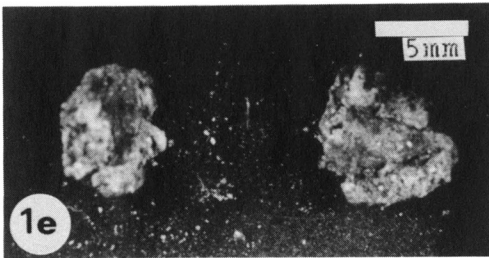
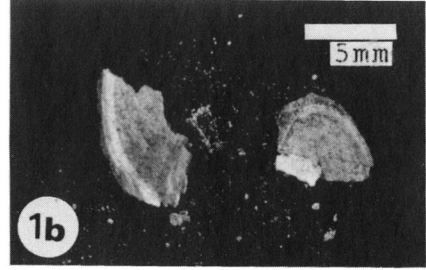


写真 94 種子の実体顕微鏡および走査型電子顕微鏡写真  
Plate 94 Seeds examined with a stereoscopic microscope and a scanning electron microscope



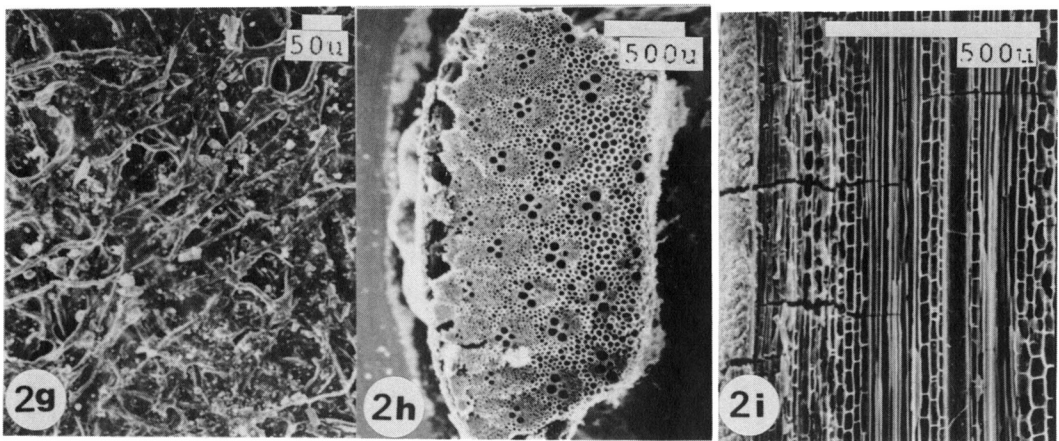
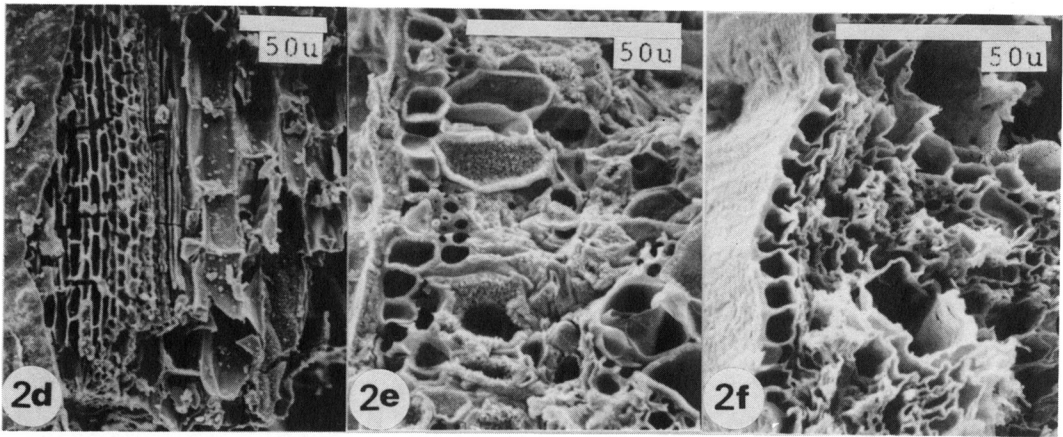
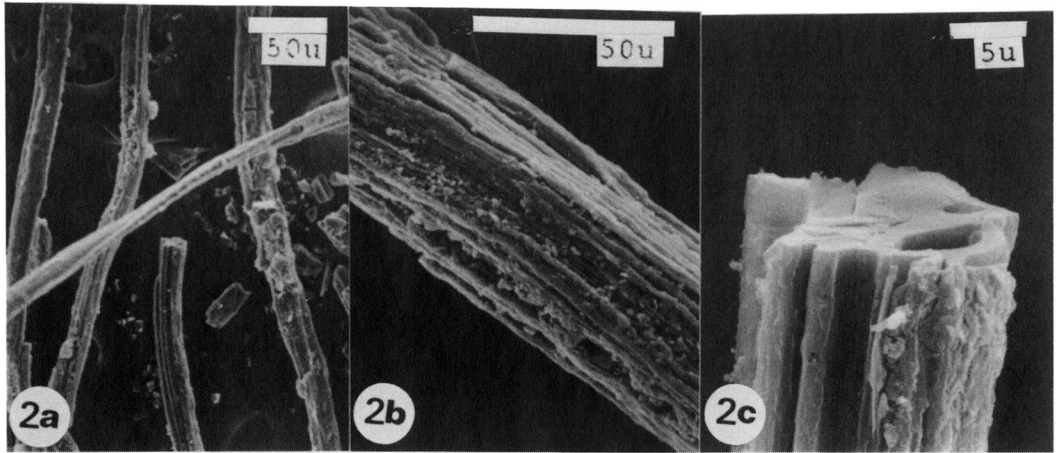


写真 95 炭化した縄・畳・紙・竹の走査型電子顕微鏡写真

Plate 95 Ropes, *tatami* (mat), paper and bamboo examined with a scanning electron microscope

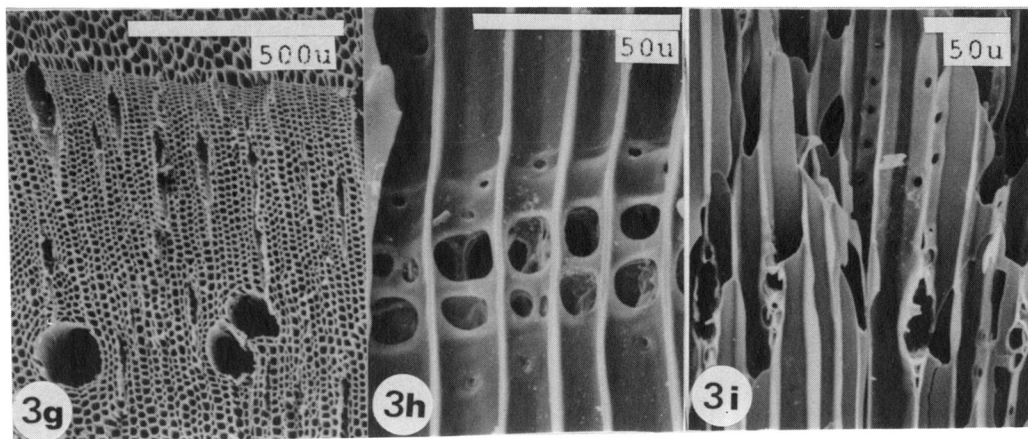
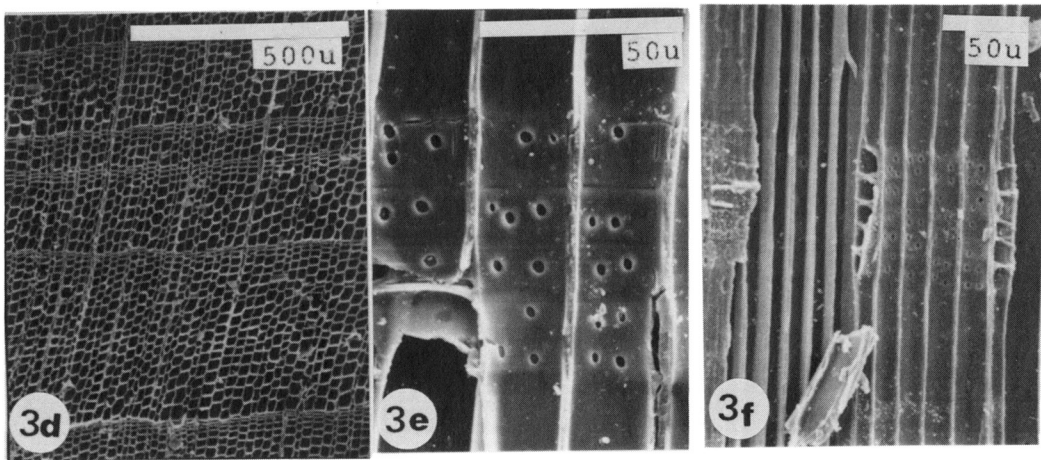
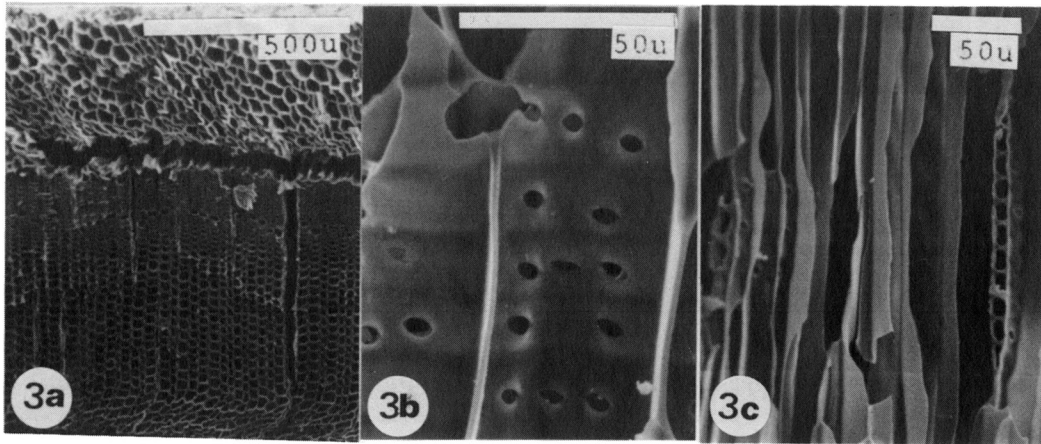


写真 96 炭化木材片の走査型電子顕微鏡写真 (1)

Plate 96 Carbonized wood samples examined with a scanning electron microscope

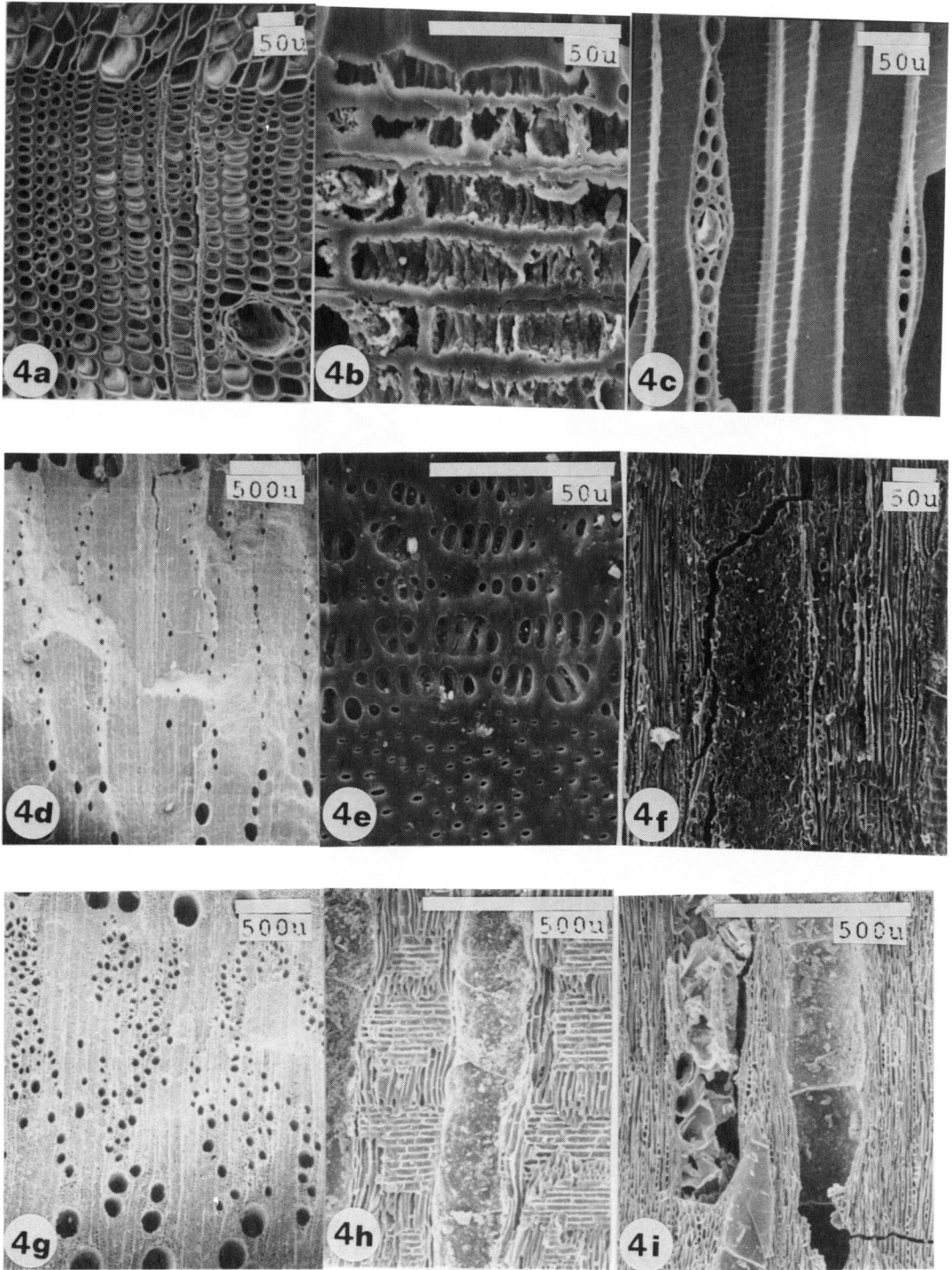
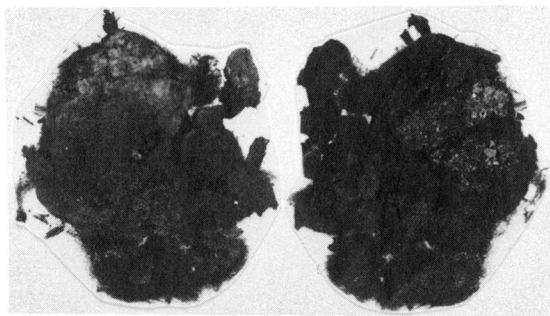
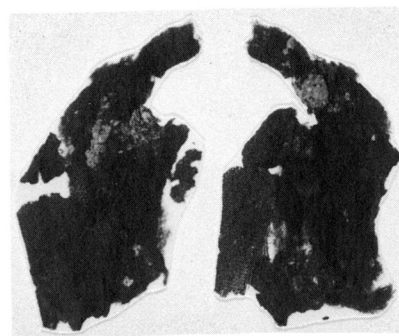
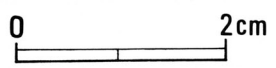


写真 97 炭化木材片の走査型電子顕微鏡写真 (2)

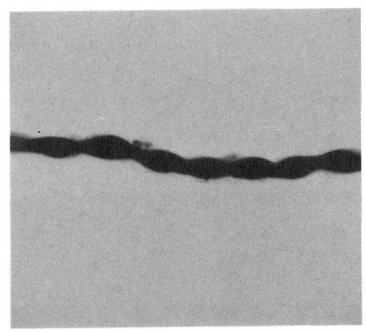
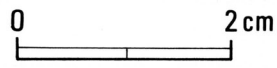
Plate 97 Carbonized wood samples examined with a scanning electron microscope



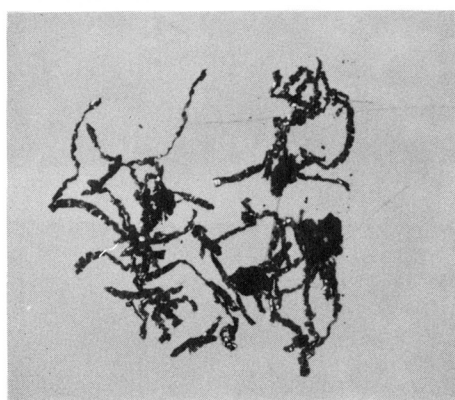
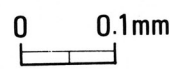
1



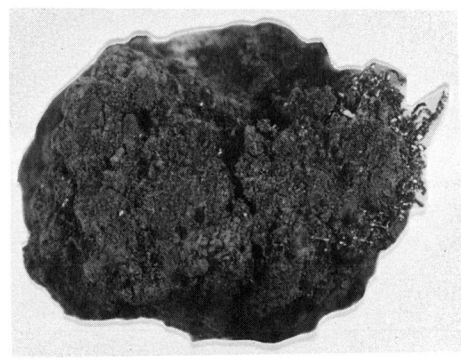
2



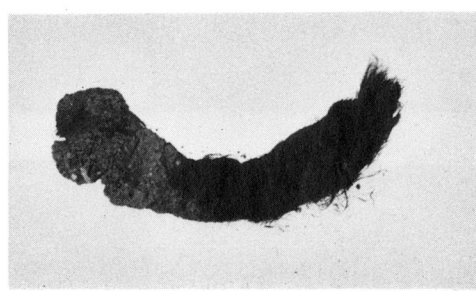
3



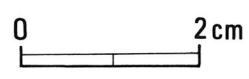
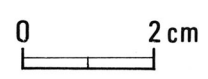
4



5

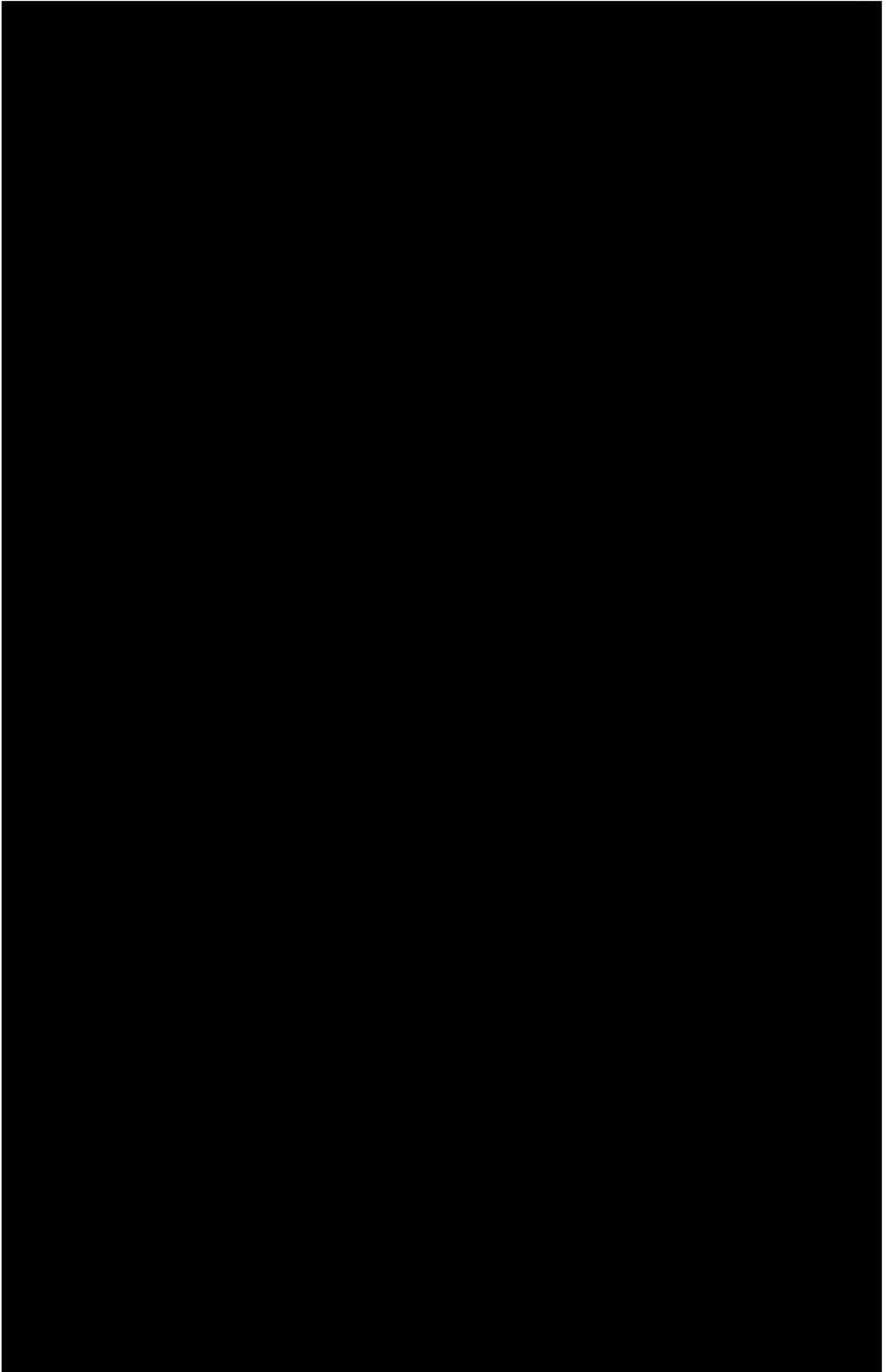


6



- 1 ~ 3 9号地下式土坑出土繊維(3は綿状繊維の顕微鏡写真)
- 4 . 5 1号土坑出土金糸(5は土塊に付着)
- 6 7・8号地下式土坑出土繩状繊維

写真 98 繊維・金糸  
 Plate 98 Clothing and ropes





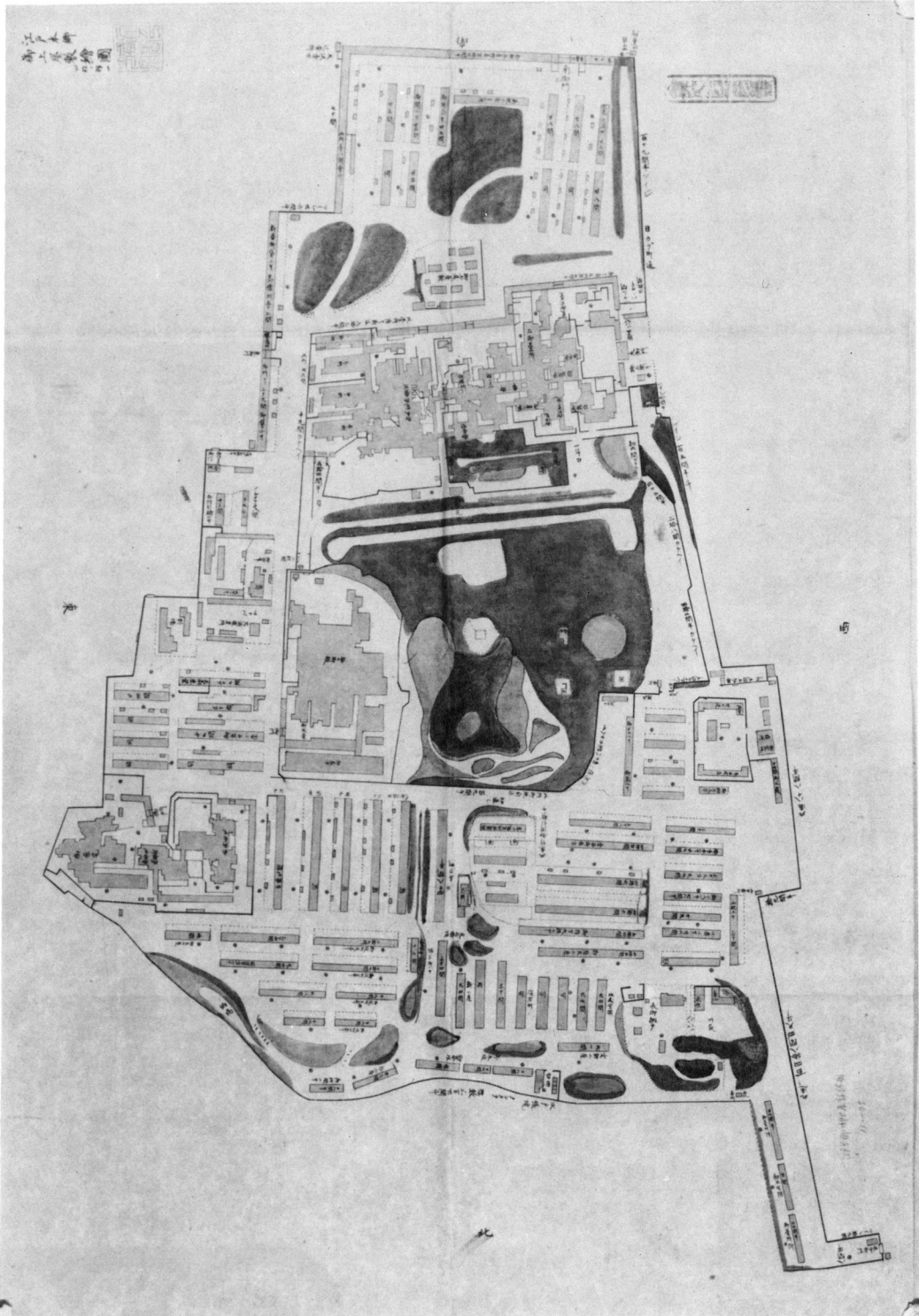
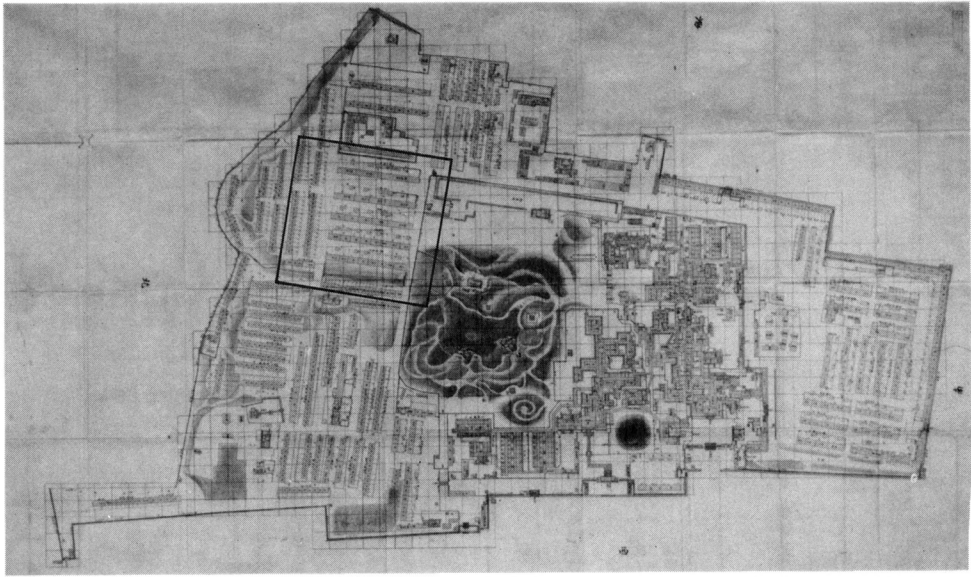


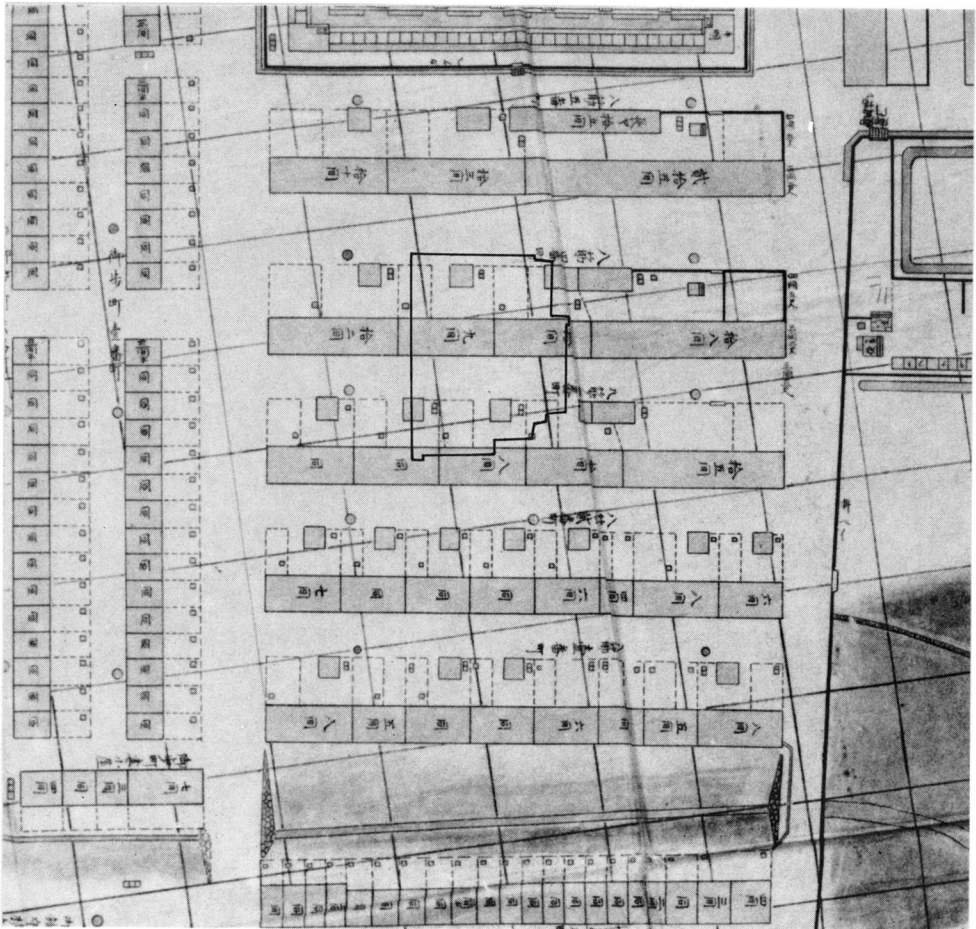
写真 100 「江戸本郷御上屋敷繪図」金沢市立図書館所蔵

Plate 100

Historical map of the Kaga Clan Hongo Property in the beginning of the 19th century



1



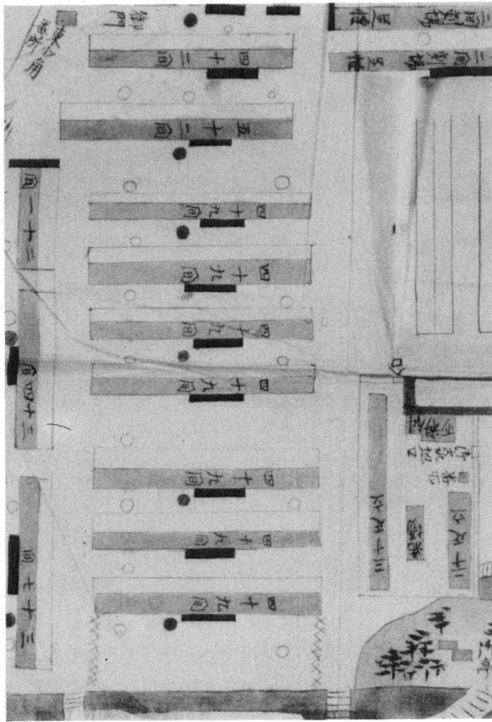
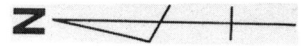
2

写真 101 理学部 7 号館地点比定図（絵図面は「江戸御上屋敷惣御絵図」金沢市立図書館所蔵）  
 （文献史料による推定。本文 491 ページ参照。）

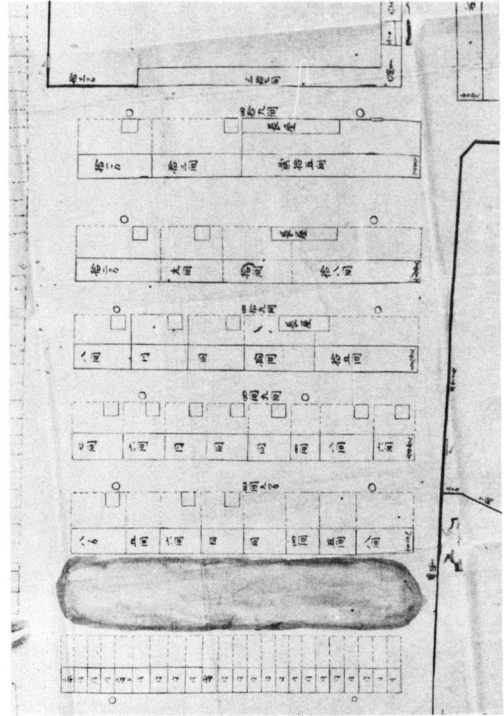
Plate 101 Location of the excavation area on the historical map in the 1840's

■ 割場支配階子

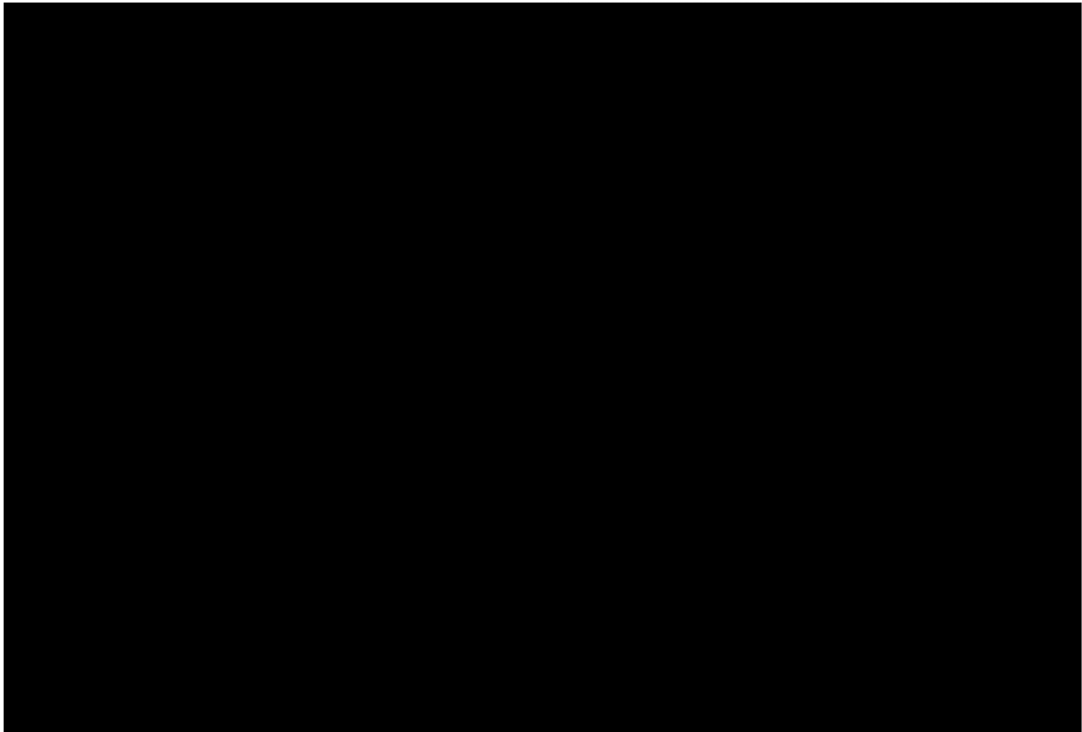
● 割場支配水溜桶



1



2



1 「前田家本郷御屋舗図」(部分) 三井文庫所蔵

2 「御上屋敷御囲并惣御小屋割図」(部分) 金沢市立図書館所蔵

写真 102 「八筋」部分図

Plate 102

Historical maps of *nagaya* (long or terrace houses) around the excavation area

東京大学遺跡調査室発掘調査報告書 1

東京大学本郷構内の遺跡

理学部 7 号館地点

1989年 3 月10日

発行 東京大学理学部遺跡調査室

印刷 株式会社 廣濟堂